



8 Embleton Chase Weir Views VIC

4 2 2

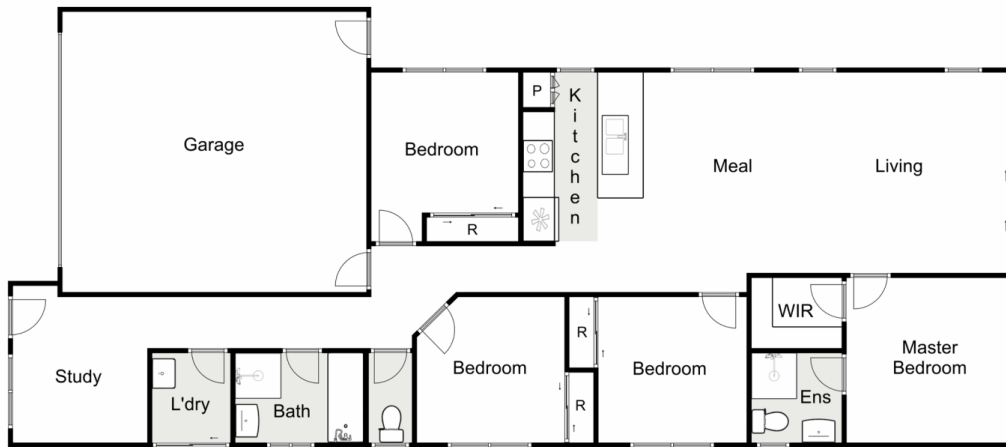
Situated in the growth corridor of Weir Views and under five years old, sits this exceptional family home. Located within close proximity to schools, Melton South and Cobblebank train station, walking tracks, parks and the brand new Opalia Shopping Centre, it is easy to see why the area is in such high demand for owner occupier and investors alike.

This well thought out floorplan, complimented by its modern features and colour palate throughout, comprises of: four bedrooms with BIR's (master bedroom features WIR and ensuite), additional study/sitting area upon entry, stunning kitchen with stainless steel appliances and ample storage which oversees the large open plan living/dining area. Moving outside there is plenty of space on offer, featuring a large concreted bbq area, kids sandpit and a large side yard with potential side access.

Price : \$ 444,000
Land Size : 405 sqm
View : <https://www.ypa.com.au/7399973>



Mark Edwards
0422 017 068



8 Embleton Chase, Weir Views

ypa

Whilst every attempt has been made to ensure the accuracy of the floor plan contained here, measurements of doors, windows, rooms and any other items are approximate and no responsibility is taken for any error, omission, or mis-statement. This plan is for illustrative purposes only and should be used as such by any prospective purchaser. The services, systems and appliances shown have not been tested and no guarantee as to their operability or efficiency can be given.

