



15 Native Way Kurunjang VIC

4  2  2 

Situated in the heart of the Pennyroyal Estate, in close proximity to walking tracks, public transport, schooling and more, this gorgeous family home offers convenient living for owner occupiers and investors alike. Immediately impressive as you arrive with low maintenance front landscaping and meticulously cared for and loved, there is nothing to be done except move in and enjoy.

Upon entry you are welcomed by high ceilings, offering an amazing sense of space and luxury. As you navigate seamlessly through this functional floorplan, you will notice the quality in even the finest details, from the beautiful floorboards to the flawless interior styling.

Comprising of four large bedrooms, the master suite of which includes a large walk-in wardrobe and ensuite. The remaining bedrooms are all a great size, one with walk-in

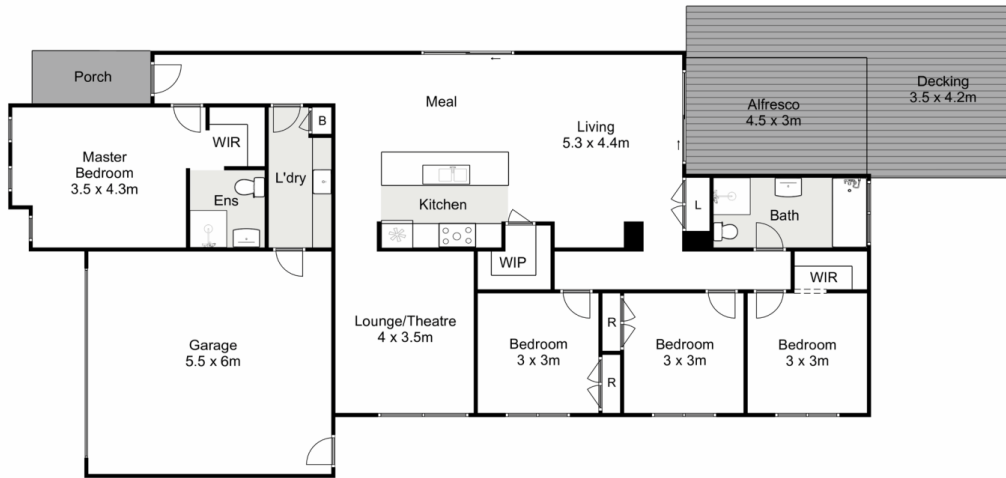
Price : \$ 530,000
Land Size : 400 sqm
View : <https://www.ypa.com.au/7399964>



Mark Edwards
0422 017 068



Shane Spiteri
0488 980 115



15 Native Way, Kurunjang

Ypa

Whilst every attempt has been made to ensure the accuracy of the floor plan contained here, measurements of doors, windows, rooms and any other items are approximate and no responsibility is taken for any error, omission, or mis-statement. This plan is for illustrative purposes only and should be used as such by any prospective purchaser. The services, systems and appliances shown have not been tested and no guarantee as to their operability or efficiency can be given.

