



14 Desert Gum Way BROOKFIELD VIC

4  2  2 

This exquisite family home will have you impressed at first sight. Constructed by a local builder, this home is characterised by a high level finish throughout and will be hard to go past.

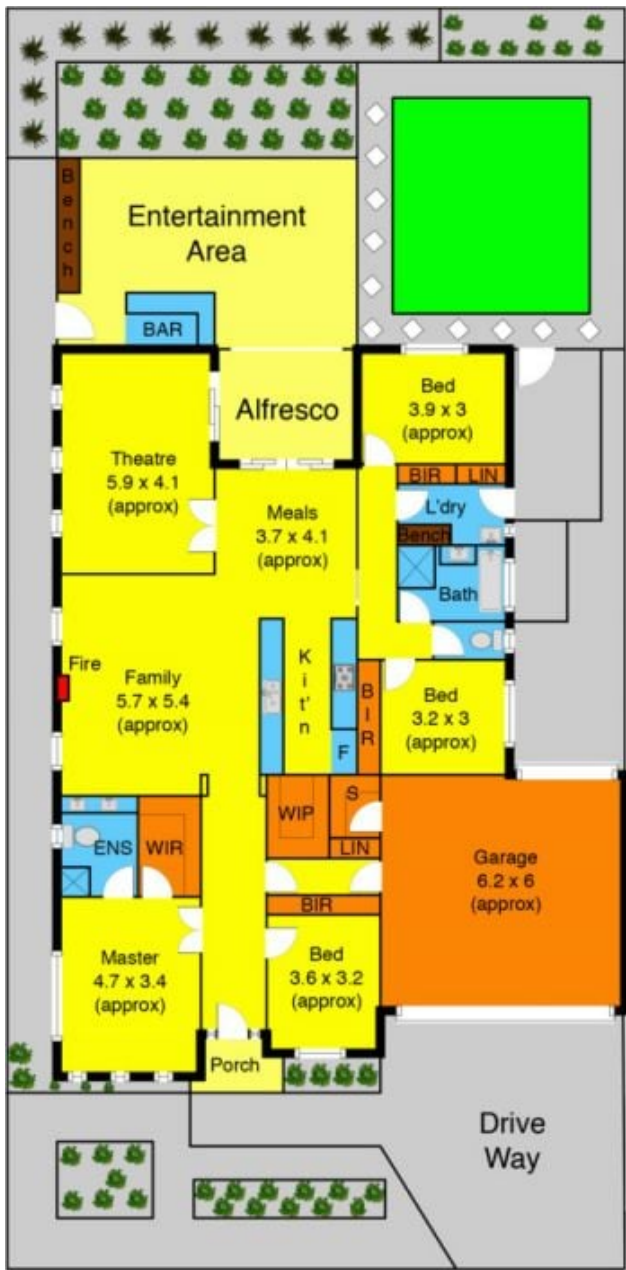
Positioned in a tree-lined street within Brookfield's Botanica Springs Estate, displaying excellent street appeal and brimming with charm, it is sure to catch your eye. Just one step inside and the pleasure continues with an inviting and functional floor plan and lovely garden views from many vantage points.

Boasting: 4 bedrooms, main master bedroom with a stylish ensuite and walk-in robe, stunning open plan living and dining area, quality kitchen with stainless steel appliances complemented by stone benchtops, while still offering a separate rumpus room adding extra space for any growing

Land Size : 578 sqm
View : <https://www.ypa.com.au/7399231>



Shane Spiteri
0488 980 115



Desert Gum Way

