



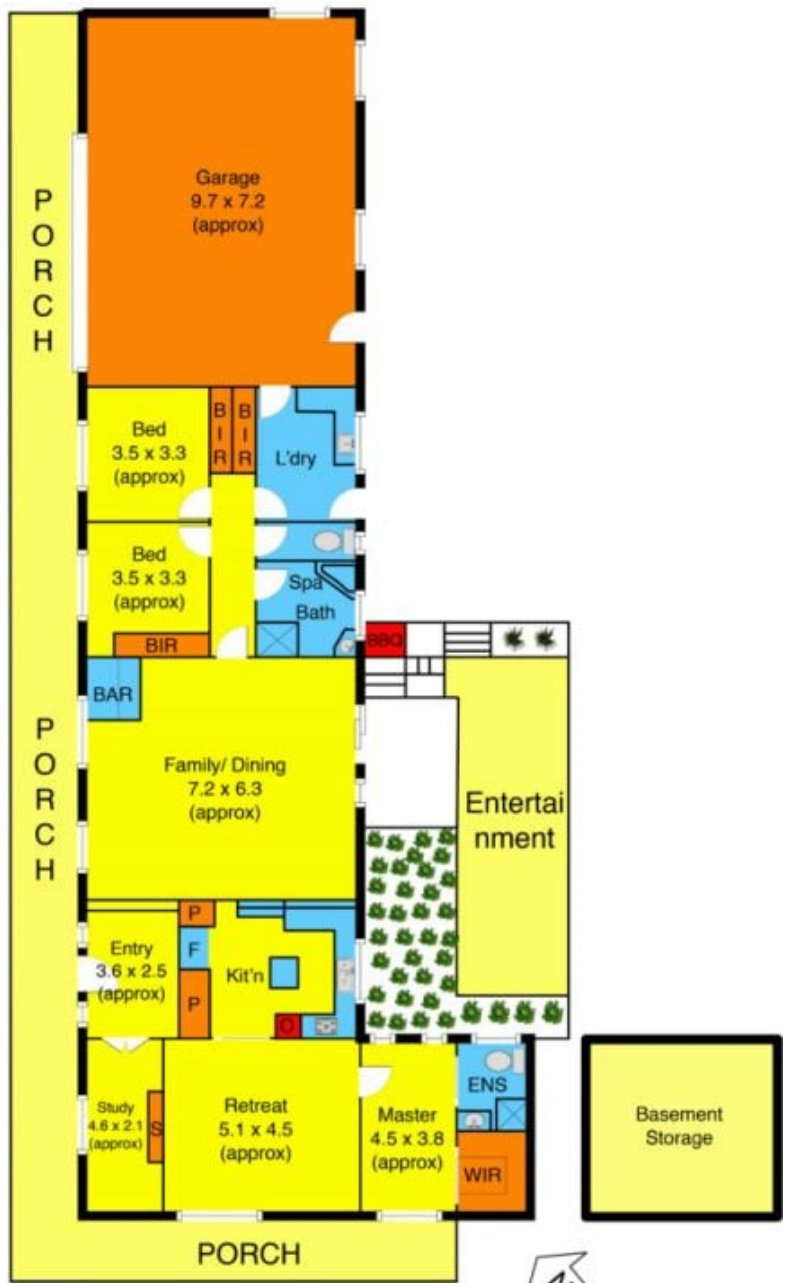
1 Rae Court DARLEY VIC

3  2  3 

This home impresses at first sight, blending timeless elegance with modern comfort which proudly defines this desirable and captivating family home. Displaying excellent street appeal, brimming with charm, the interior of the home captures lovely garden views from many vantage points. One step inside and the pleasure continues with an inviting and flexible floor plan with the most grand of entrances, boasting 3 bedrooms, main master bedroom with a stylish ensuite and walk in robe, complemented by an enormous parents retreat, stunning large living area with timber lined cathedral ceilings finished with extravagant bluestone feature wall, triple car garage with side access to accommodate up to 9 cars and trailers! The hub of the home is the classic federation panelled kitchen with quality appliances and stylish bench tops adjoining the dining, study/possible 4th bedroom and family zone. Stunning doors open out to the large covered alfresco deck providing

Land Size : 1306 sqm

View : <https://www.ypa.com.au/7399180>



Rae Court

