



## 18 Riverview Drive HOPETOUN PARK VIC

4  2  2 

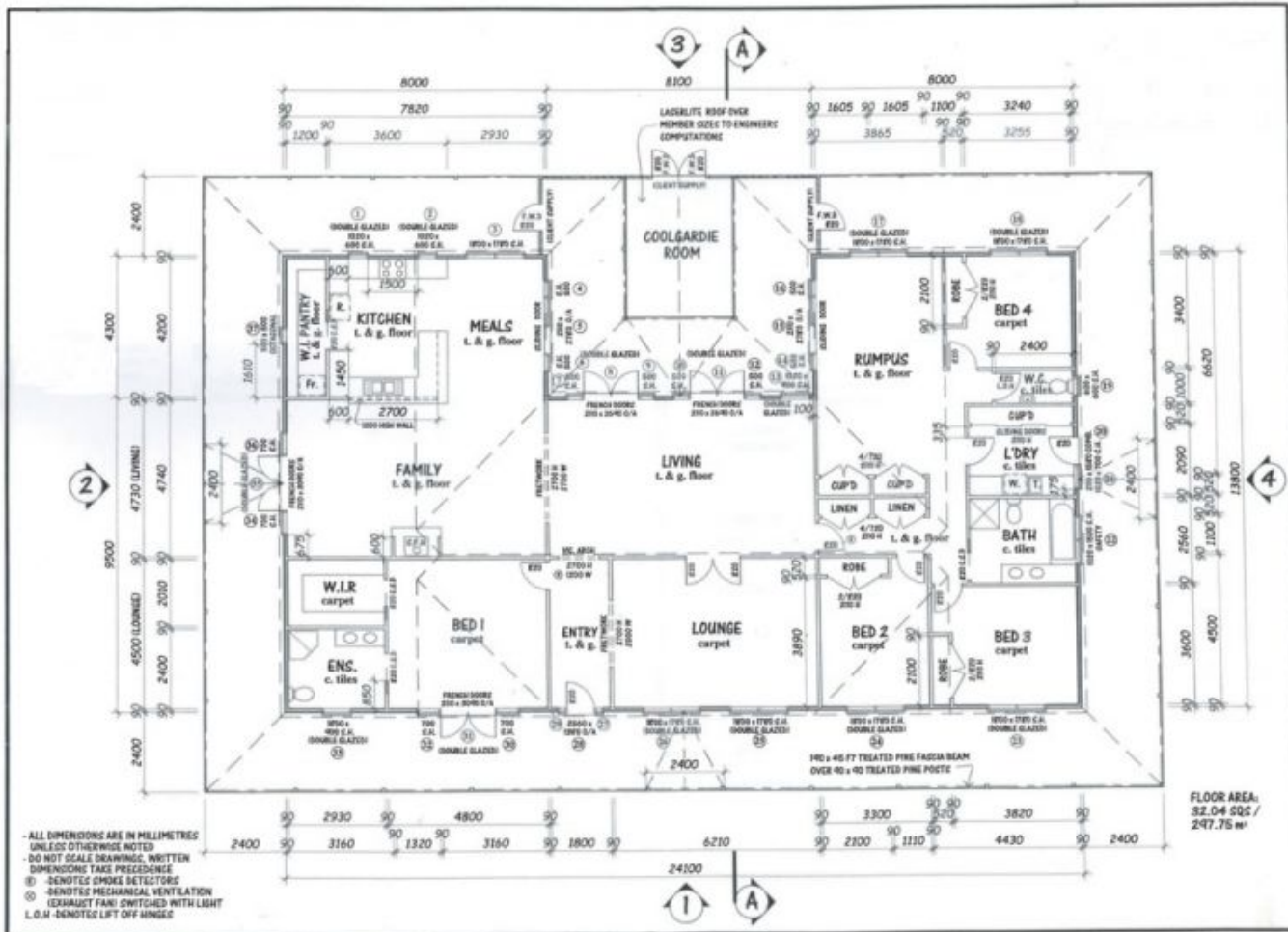
This home impresses at first sight, blending timeless elegance with modern comfort which proudly defines this desirable and captivating family home. Displaying excellent street appeal, brimming with charm, the interior of the home captures lovely garden views from many vantage points. One step inside and the pleasure continues with an inviting and flexible floor plan with the most grand of entrances, boasting 4 bedrooms, main bedroom with a stylish ensuite and walk in robe, complemented by large windows and french doors, 3 large living areas, stunning central bathroom, double car garage and 2 huge workshops with room for 8 cars! The hub of the home is the classic well-appointed kitchen with quality appliances and stylish bench tops adjoining the informal meals and family zone. Stunning doors open out to large covered alfresco deck enjoying the established a garden with stunning views of your above ground pool! This delightful home also

**Land Size** : 6119 sqm

**View** : <https://www.ypa.com.au/7399117>



**Shane Spiteri**  
0488 980 115



- ALL DIMENSIONS ARE IN MILLIMETRES UNLESS OTHERWISE NOTED  
 - DO NOT SCALE DRAWINGS, WRITTEN DIMENSIONS TAKE PRECEDENCE  
 (B) - DENOTES SMOKE DETECTORS  
 (M) - DENOTES MECHANICAL VENTILATION  
 (C) - DENOTES EXHAUST FANS SWITCHED WITH LIGHT  
 L.O.H. - DENOTES LIFT OFF HINGES