



## 12 Rainsford Place MELTON WEST VIC

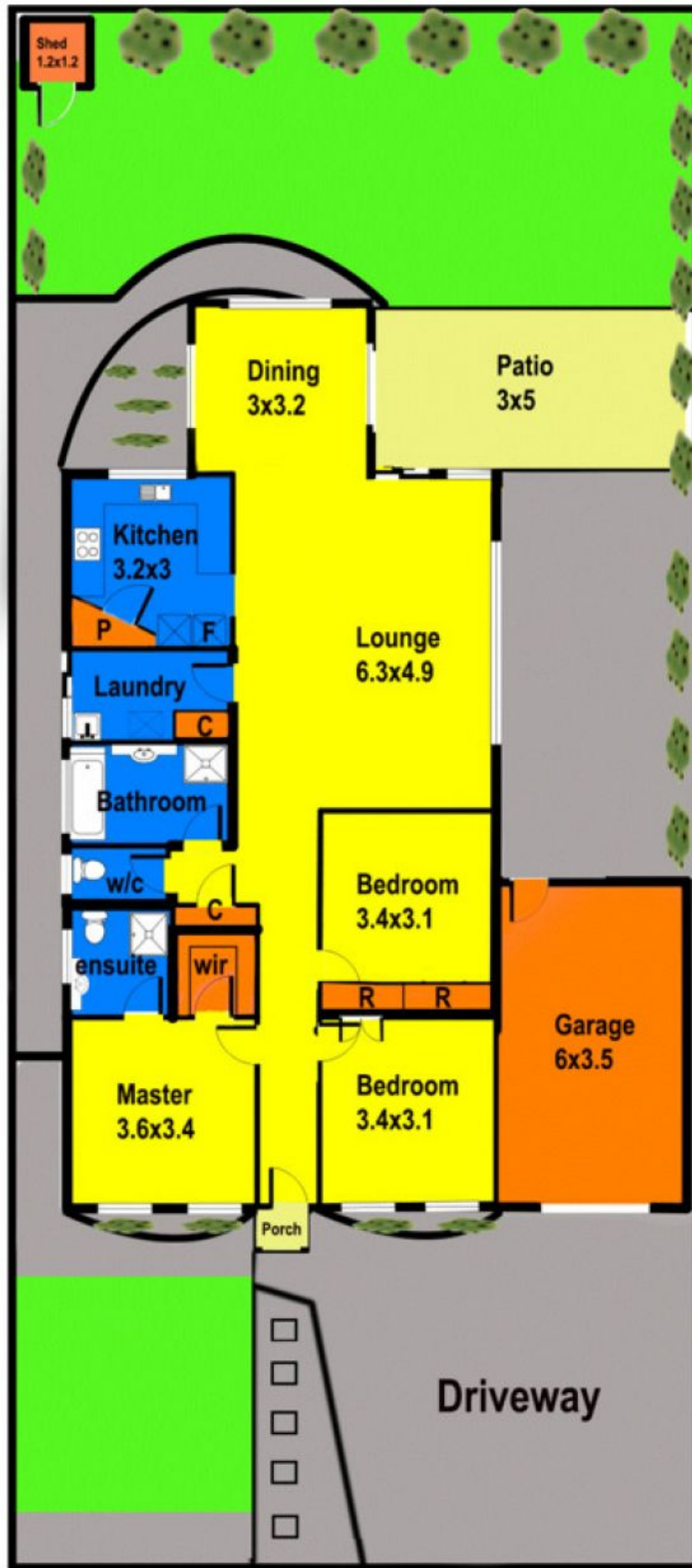
3  2  1 

Street presence, designer finishes and landscaped garden surrounds are just the beginning to this immaculate three bedroom family residence. Offering the perfect blend of contemporary styling and modern conveniences this stunning home is a stand out in today's market. Comprises master bedroom with walk in robe and ensuite, two further bedrooms with built in robes, light filled lounge, impressive open plan living/kitchen/dining room spilling out through sliding glass doors to private low maintenance entertaining area with room for the kids to play. This spectacular home further boasts light filled, central bathroom, laundry, heating/cooling, single garage and garden shed. Moments from Schools, Parks, Transport and Shopping this impressive family home is just too good to miss. Call now to before its too late!

**View** : <https://www.ypa.com.au/7399042>



**Shane Spiteri**  
**0488 980 115**



## 12 Rainsford Place

Floor plan measurements are approximate and are for illustrative purposes only. While we do not doubt the floor plan's accuracy we make no guarantee, warranty or representation as to the accuracy and completeness of the floor plan. You or your advisors should conduct a careful investigation of the property to determine your satisfaction as to the suitability for your space requirements.