



### 3 Nantha Way BROOKFIELD VIC

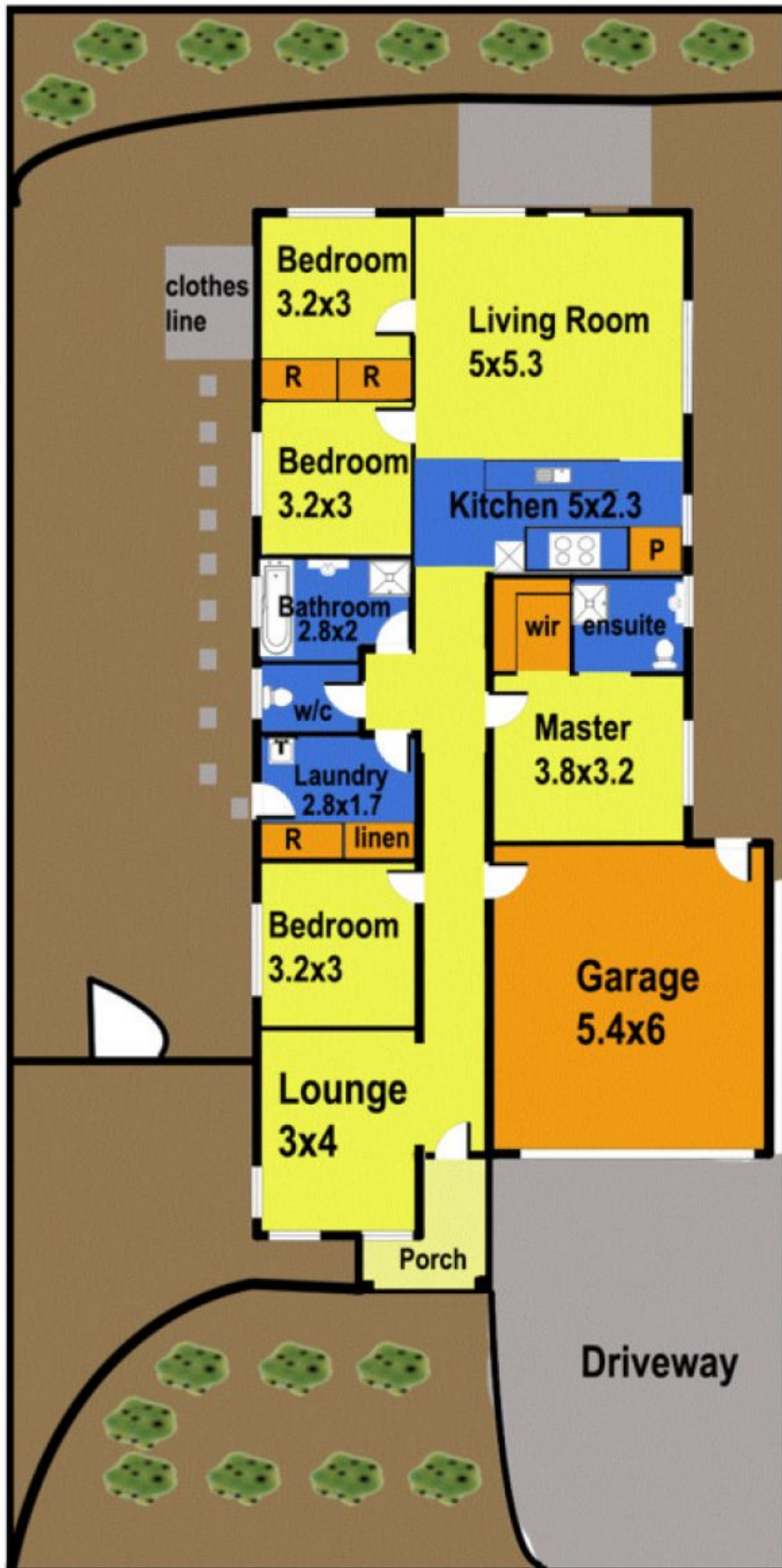
4  2  2 

This charming family style home in Botanica Springs Brookfield is sure tick all the boxes for anyone searching the property market. Set on a large allotment of 542m2 (approx.) there is definitely room to move. Comprising of four large bedrooms with BIRs (master with WIR and ensuite), formal lounge upon entry, spacious kitchen with stainless steel appliances overlooking huge open plan living and dining. Outside features a wide range of delights, with low maintenance gardens, potential side access and modern facade. Other inclusions of this fantastic property include: ducted heating, cooling, double lock up garage and so much more. Dont hesitate, book an inspection today.

**Land Size** : 542 sqm  
**View** : <https://www.ypa.com.au/7399037>



**Mark Edwards**  
0422 017 068



## 3 Nantha Way



Floor plan measurements are approximate and are for illustrative purposes only. While we do not doubt the floor plan's accuracy we make no guarantee, warranty or representation as to the accuracy and completeness of the floor plan. You or your advisors should conduct a careful investigation of the property to determine your satisfaction as to the suitability for your space requirements.