



## 44 Gallery Avenue MELTON WEST VIC

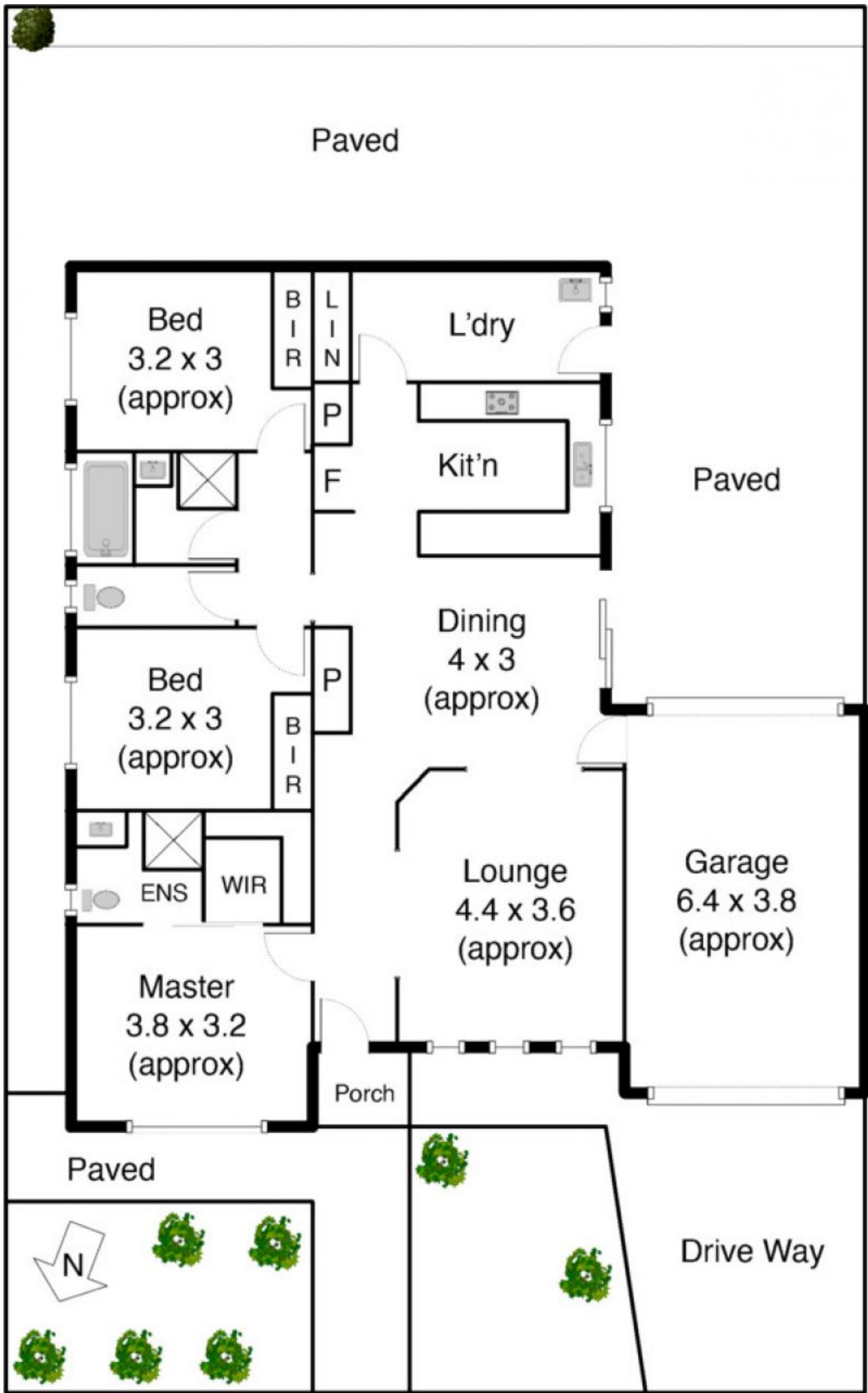
3  2  1 

First home, family home or invest with this sleek design and finished with the highest quality this spacious residence is going to be hard to go past. With 3 generous size bedrooms with BIR, master with ensuite and WIR, large spacious lounge with open meals area which leads out to concrete entertaining area. Also includes 9 foot ceilings, window furnishings, ducted heating, cooling, alarm, video intercom, fully landscaped, concreted throughout and remote garage. Totally complete to the highest standard and built by Exclusive Homes, winners of Melton Shire Council's Best Trade and Construction Business 5 years in a row, don't wait call today to organise your inspection.

View : <https://www.ypa.com.au/7398962>



**Shane Spiteri**  
0488 980 115



Paved

Bed  
3.2 x 3  
(approx)

B I R  
L I N  
P  
F

L'dry

Kit'n

Paved

Bed  
3.2 x 3  
(approx)

P

Dining  
4 x 3  
(approx)

ENS

WIR

Lounge  
4.4 x 3.6  
(approx)

Garage  
6.4 x 3.8  
(approx)

Master  
3.8 x 3.2  
(approx)

Porch

Paved



Drive Way

Gallery Av