



15 Parris Avenue MELTON WEST VIC

4 2 2

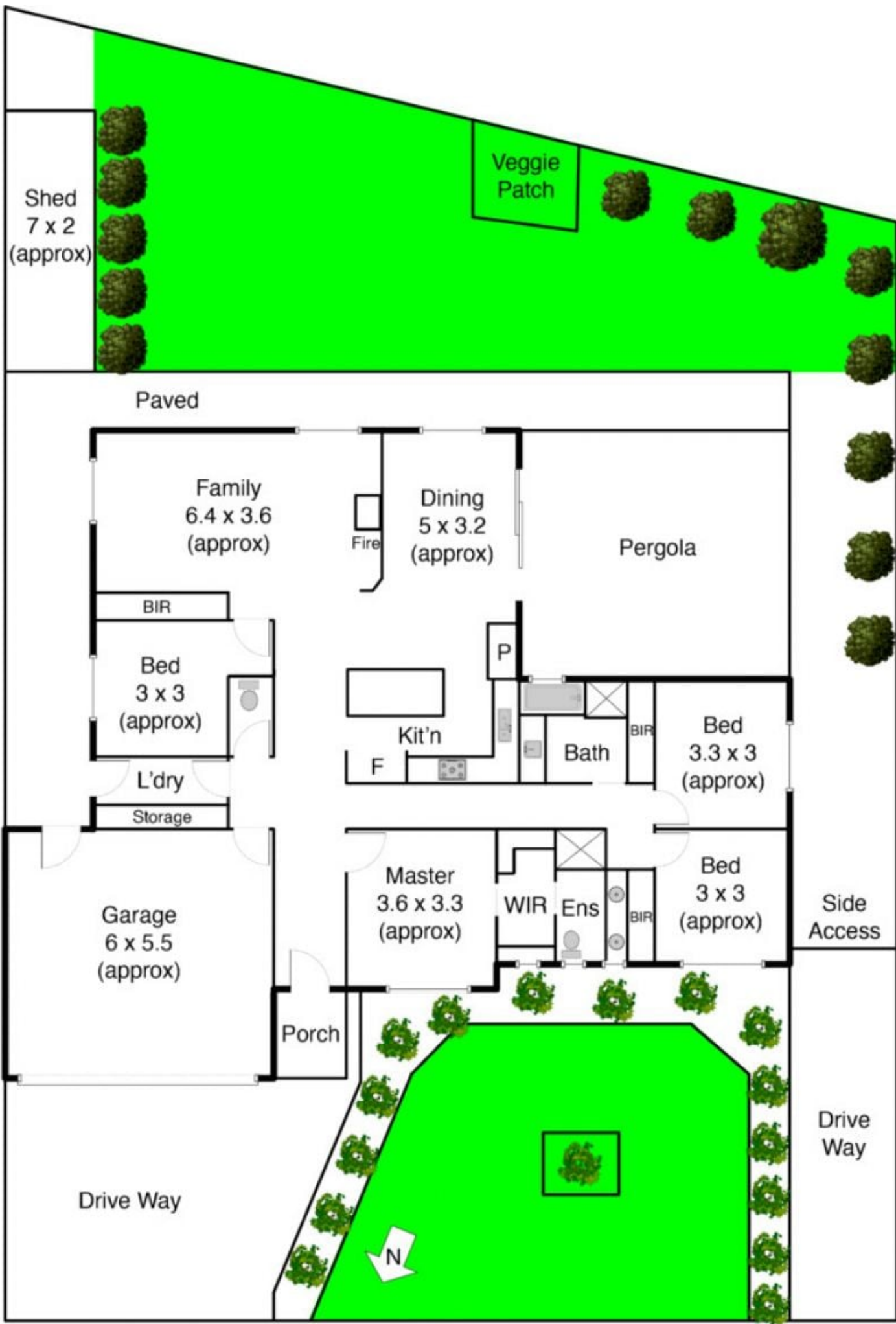
This is living at its very best! With great location and walking tracks all at your front door, this family home sits on the edge of everything great about Arnold's creek. Contemporary family residence, grand entrance, quality fixtures and fittings throughout set the high standards to this modern day classic. Comprising: four bedrooms with BIR (master boasting WIR and ensuite). Large lounge room, spacious open plan living and dining area overlooked by a sleek kitchen complete with breakfast bar with stone bench tops and top brand appliances. Sliding doors seamlessly combine the inside without revealing a huge stunning entertainer's alfresco area and huge garden with side access. Additional features include: ducted heating/cooling, ample storage, double remote garage and fully landscaped garden surrounds. Appreciate quality, call today.

Land Size : 600 sqm

View : <https://www.ypa.com.au/7398944>



Shane Spiteri
0488 980 115



Parris Av