

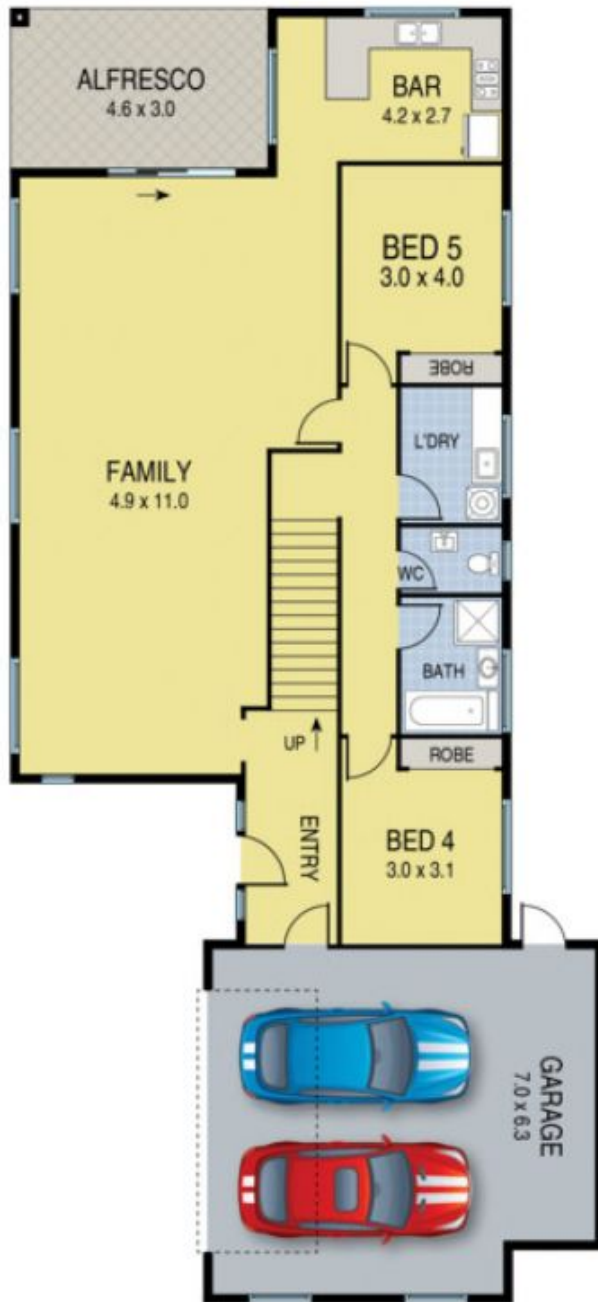


8 Douglas Court WESTMEADOWS VIC

5  3  2 

- 5 bedrooms plus study
- Two big open plan living areas both with their own large kitchens
- Reverse cycle ducted heating & cooling
- Alarm & CCTV
- Double remote garage, with internal access
- Two large alfresco areas
- Photo ID is required at all inspections

View : <https://www.ypa.com.au/7398167>



GROUND FLOOR



FIRST FLOOR

8 Douglas Court, Westmeadows