



111 Erinbank Crescent Westmeadows VIC

3  1  1 

This great family home is well suited to first-home buyers, downsizers, or investors alike! Positioned opposite parklands, the perfect play area for kids, walking the dog, and family fun.

Built on a 638m² (approx.) allotment, this functional family home has it all, three bedrooms enhanced with built-in robes, central to the separate bath and toilet. Open kitchen and meals area, a spacious living area with air-conditioning and heating.

Seamlessly the outdoor entertaining area is the perfect place to host family and friends, and complimented with manicured gardens.

Includes lock-up car accommodation, gas heating and reverse cycle air-conditioning.

Price : \$ 520,000
Land Size : 638 sqm
View : <https://www.ypa.com.au/7398066>

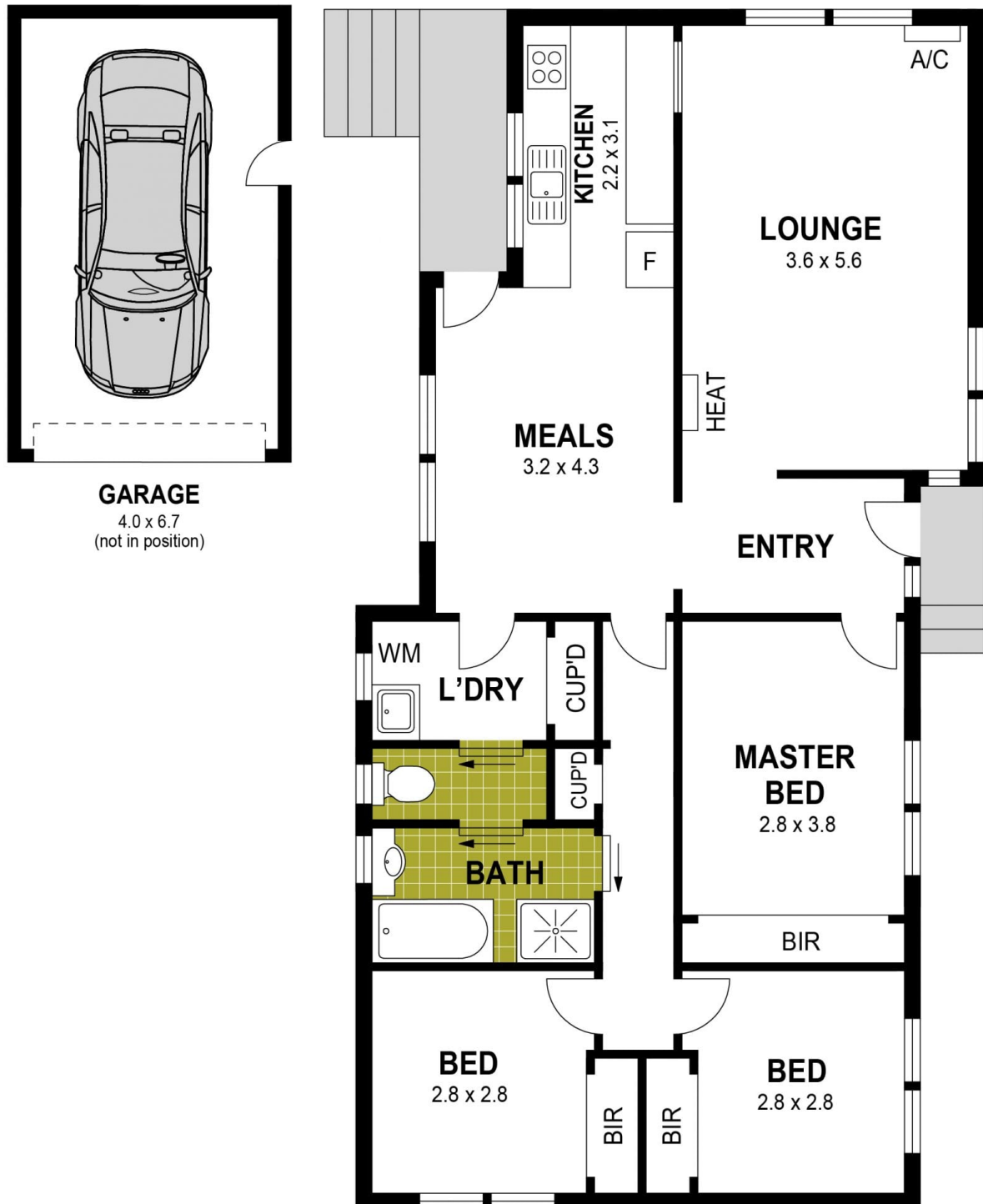


Luke Albioli
0403 700 003



Jeremy Pate
0428 085 280

111 Erinbank Crescent, Westmeadows



Disclaimer : Whilst every precaution is taken to ensure information provided regarding this property is highly accurate, the measurements are for guidance only and are not to be used for any other purpose. The agency and creators of this illustration deny responsibility for any omissions or errors contained herein, or for practices carried out with further use of these dimensions. Dimensions are taken from the structural walls in each respective room and will be taken on the longest dimension to maintain uniformity across plans.