



4/30 Fawkner Street Westmeadows VIC

2 2 1

First home buyers, downsizers and investors, hear me out!

Certainly, one of Westmeadows best 2BR villas with an impressive interior featuring a massive master bedroom including its own ensuite and WIR, additional bedroom serviced by a stylish main bathroom and a versatile open plan living, kitchen meals area. Outside you've got a shed for extra storage, paving area and yes, don't worry, enough space for children and pets to play about. However, an extension to the backyard is multiple parklands only walking distance away like Coopers Hill Drive playground, Moonee Ponds Creek, and Westmeadows Reserve. Further neighbours are, Claudio's IGA, Westmeadows Village, medical facilities, and it gets even better? the well renowned Mayflour café is right across the road! Not to mention easy access to major freeways, a 7-minute drive to the Airport and 22km from Melbourne CBD.

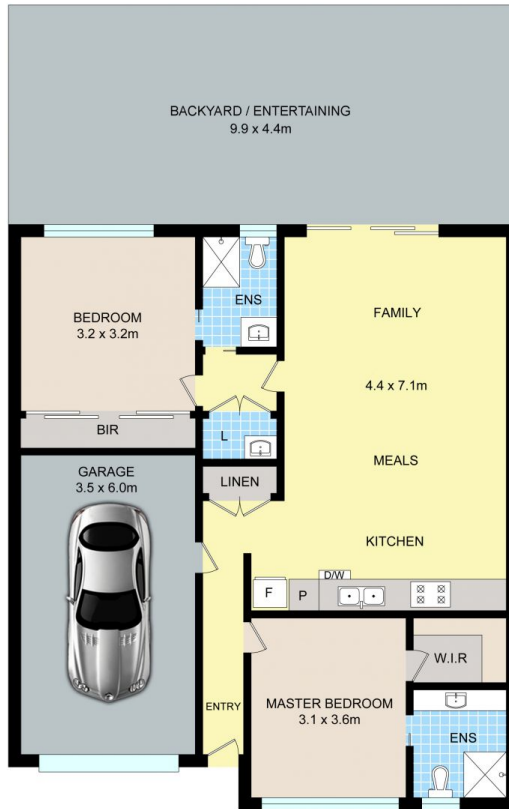
Price : \$ 620,000
Land Size : 152 sqm
View : <https://www.ypa.com.au/7398039>



Luke Albioli
 0403 700 003



Jeremy Pate
 0428 085 280



4/30 FAWKNER ST, WESTMEADOWS

Disclaimer: Floor plan is for marketing purposes and is to be used as a guide only. Measurements are approximate and for illustrative purposes. Interested parties should make and rely on their own enquiries or refer to contract drawings for more accurate information.