

108/83 Queens Bridge Street Southbank VIC

2 2 1

Southbank Towers is Melbourne's first multi storey residential building constructed with the new earthquake code, in the most sought after inner-city location and perfectly situated to all that Melbourne has to offer with only moments to Crown Casino's Entertainment Complex, Melbourne's CBD, Southbank's Arts Precinct as well as the lively Yarra River promenade featuring al fresco dining.

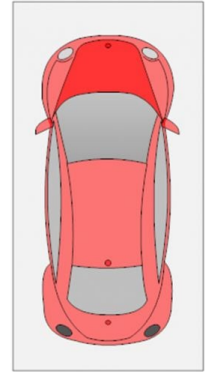
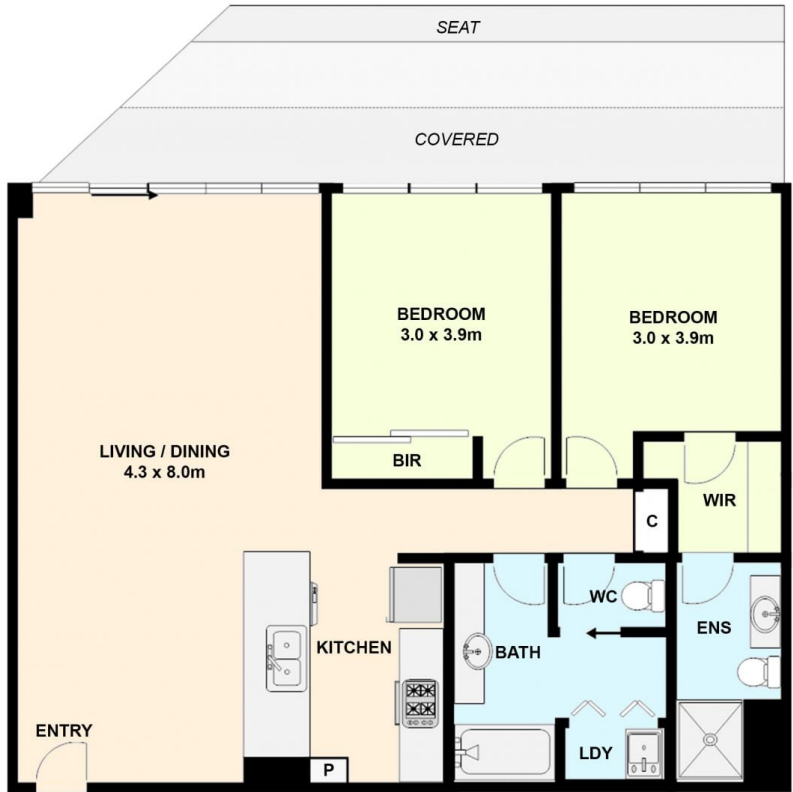
A state-of-the-art building with quality residences and luxurious amenities that provide an idealistic lifestyle choice. This is one of Melbourne's finest, a deluxe apartment that will definitely impress the professional, first home buyer or savvy investor.

? Timber flooring compliments the generous open plan living/dining/kitchen area together with two spacious bedrooms, master with walk-in robe and full ensuite,

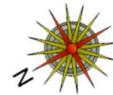
View : <https://www.ypa.com.au/7398034>



Michael Sassine
0421 023 243



1 PARKING SPOT IN BUILDING CAR PARK
(NOT IN POSITION)



108/83 Queensbridge Street, Southbank
All data and dimensions shown in this sketch are approximate.