

33 Cassandra Drive Gladstone Park VIC

3 1 1

This classic interior has openness and opportunity throughout, equipped with hardwood flooring and tiles, ducted heating, two split systems, and double blinds throughout. It offers generous storage, a study, and three bedrooms with built-in robes, central to the separate bathroom facilities, and full-sized laundry providing external access.

The open-plan kitchen and meals area with ample opportunity provides easy access to the living room, making entertaining a breeze! Completed with a carport, shed for extra storage, and a well-appointed spacious backyard providing room for kids and pets to play!

Keeping location in mind, enjoy being walking distance to all that Gladstone Park has to offer, such as Gladstone Park Shopping Centre, the well renowned Gladstone Park

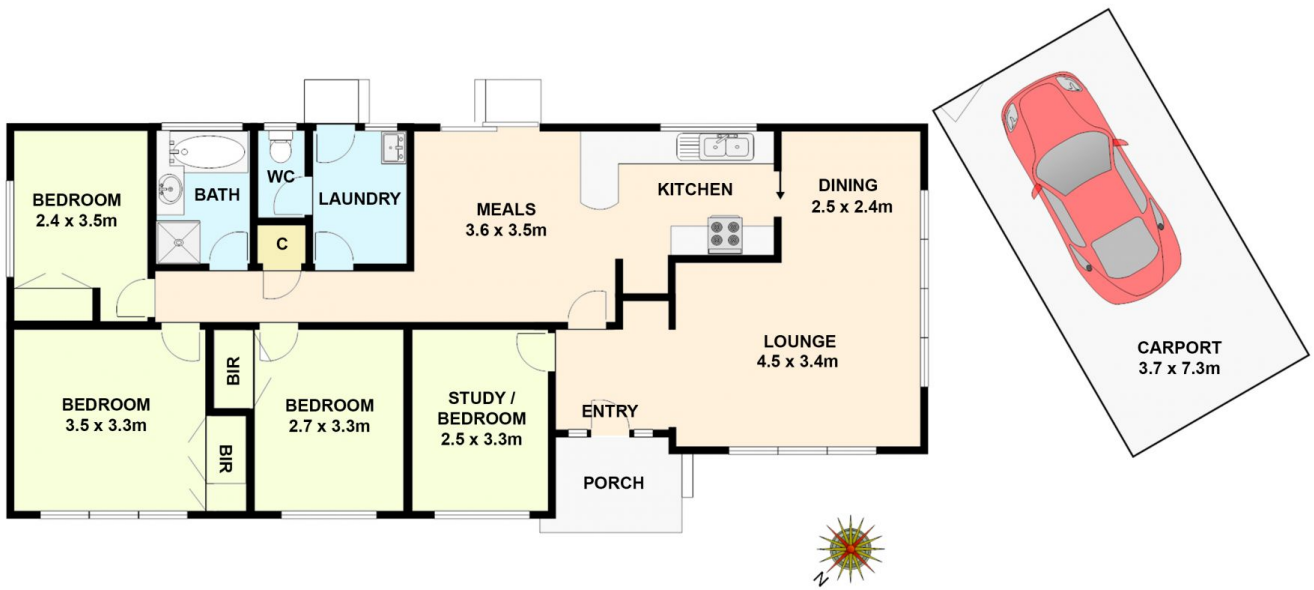
Price : \$ 670,000
Land Size : 563 sqm
View : <https://www.ypa.com.au/7398030>



Michael Sassine
0421 023 243



Jeremy Pate
0428 085 280



33 Cassandra Drive, Gladstone Park
All data and dimensions shown in this sketch are approximate.