

47 Snaefell Crescent Gladstone Park VIC

3 1 2

Set in the heart of Gladstone Park, this classic family home is proudly positioned amongst a quite local just off North Circular Road and minutes away from Gladstone Park Shopping Centre, the well renowned Gladstone Park Secondary College, public transport, Tullamarine Airport and easy access to major freeways.

Open plan designed and consisting of natural light throughout this neat and tidy home has been renovated head to toe. Featuring a well-appointed living area adjoined by kitchen/meals enhanced by s/s appliances (gas oven & stove top) and Caesarstone benchtops.

All three bedrooms consist of floor to ceiling mirrored built in robes and newly laid carpet, serviced by a superb fully tiled bathroom with double shower & vanity, matte black fixtures, and separate WC.

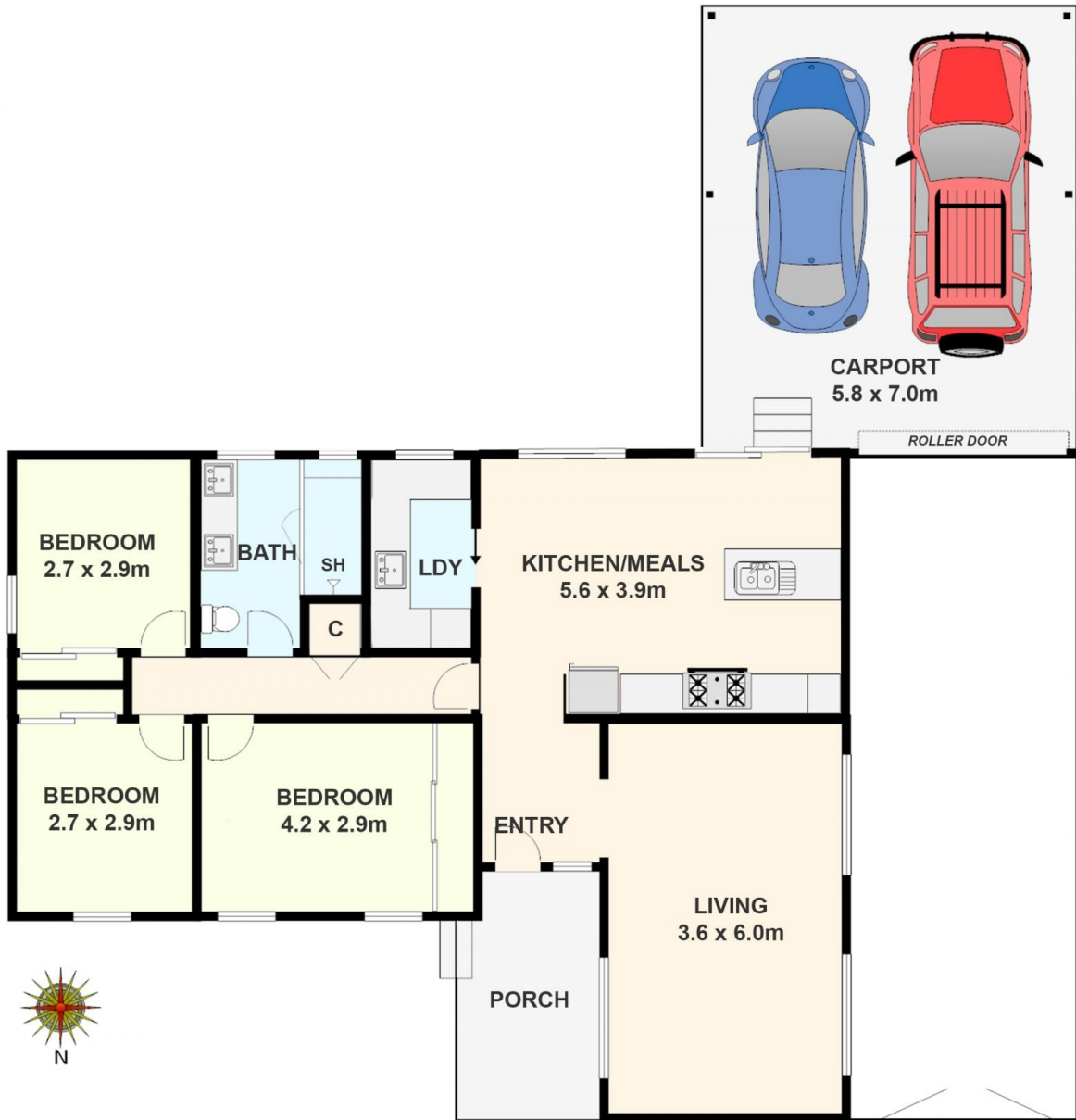
Land Size : 537 sqm
View : <https://www.ypa.com.au/7398023>



Michael Sassine
0421 023 243



Jeremy Pate
0428 085 280



47 Snaefell Crescent, Gladstone Park
All data and dimensions shown in this sketch are approximate.