



289 Carrick Drive Gladstone Park VIC

3  1  1 

A solid brick home full of absolute character, presents a brilliant opportunity for low maintenance living in one of the most convenient locations of Gladstone Park. Situated directly opposite parklands, walking distance to local amenities, Gladstone Park Secondary College, public transport, a 10-minute drive to Tullamarine Airport and easy access to major freeways.

Step inside and discover a comfortable, light filled home with hardwood flooring, large two panel windows, ducted heating, and evaporative cooling throughout, spacious living area with adjoining formal dining, followed by the well-appointed kitchen/meals area, kitchen offering S/S appliances, integrated dishwasher, subway tiled splash back and an abundance of cupboard space.

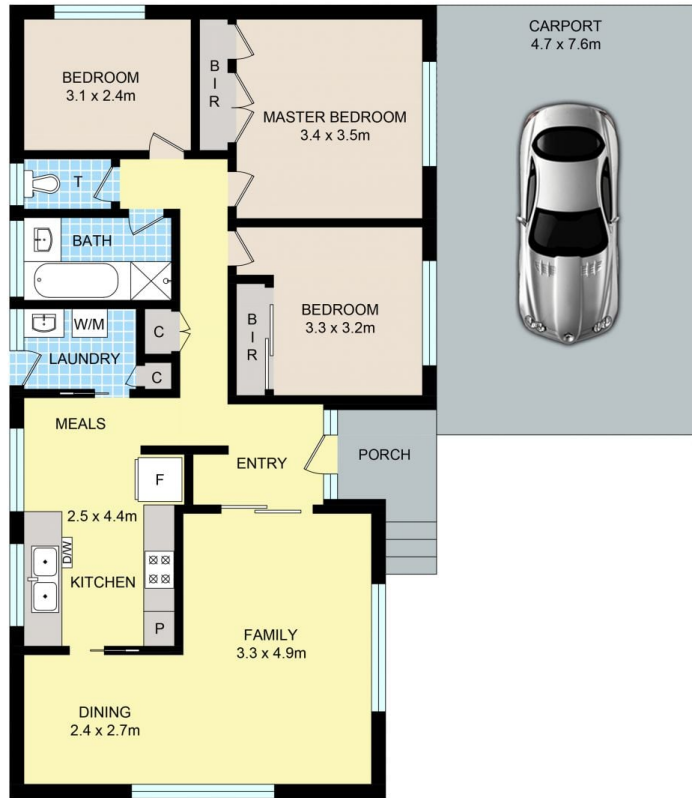
Concluding with 3 generous sized bedrooms, master with BIR, updated central bathroom and full-sized laundry.

Land Size : 538 sqm

View : <https://www.ypa.com.au/7397990>



Jake Lisner
0437 399 908



289 CARRICK DR, GLADSTONE PARK

Disclaimer: Floor plan is for marketing purposes and is to be used as a guide only. Measurements are approximate and for illustrative purposes. Interested parties should make and rely on their own enquiries or refer to contract drawings for more accurate information.