



## 2 MacKinnon Court Attwood VIC

3  1  1 

Situated in leafy surroundings and on a great sized 678sqm(approx.) corner allotment, this tidy brick classic, is ideal for first homebuyers or investors seeking a potential opportunity to develop (STCA).

**Price** : \$ 703,000

**Land Size** : 678 sqm

**View** : <https://www.ypa.com.au/7397982>

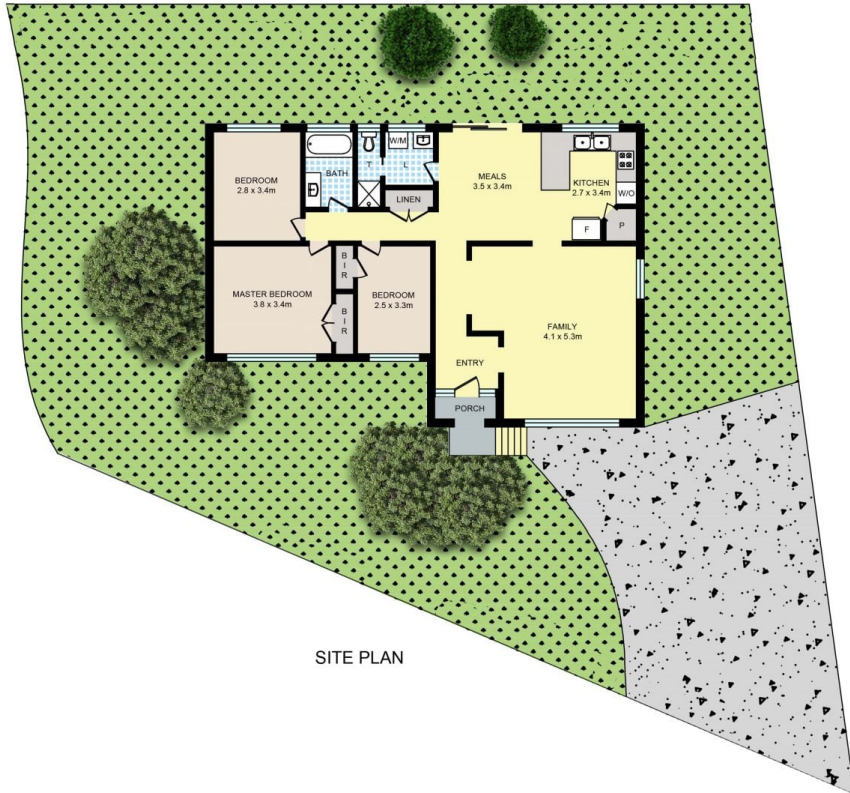
Features 3 great sized bedrooms, updated central bathroom, tidy kitchen with BIP, generous meals area, a spacious lounge, adjoining dining room, full-sized laundry, gas and split system heating/cooling.

The large private backyard has plenty of lawn for children, pets or a gardening enthusiast to enjoy, a shed for extra storage, paving area for entertaining and secured fencing all round.

In a convenient location near schools and local shops. One look is all you will need!



**Luke Albioli**  
0403 700 003



SITE PLAN

## 2 MACKINNON CT, ATTWOOD

Disclaimer: Floor plan is for marketing purposes and is to be used as a guide only. Measurements are approximate and for illustrative purposes. Interested parties should make and rely on their own enquiries or refer to contract drawings for more accurate information.