



**2/21 Norcal Court Greenvale VIC**

3 2 2

**SOLD AT AUCTION BY JASON PADULA!**

Go to Jason Padula Real Estate on Facebook and YouTube, for all the Auction campaign highlights!

Only two years young, go ahead and spoil yourself by securing this stylish, split-level town house of approximately 21 squares!

Nestled ideally in the bowl of peaceful Norcal Court (near the prime Barrymore Road/Normanby Drive junction), it overlooks a lush sea of green and is within walking distance to walking trails, bus stop, schools + shops.

Positioned at the rear of this boutique 4-townhouse complex, an exposed aggregate pathway + steps lead you down to the front door. Step inside to a dual-level layout comprising good-sized bedrooms fitted with large robes +

**Price** : \$ 629,000

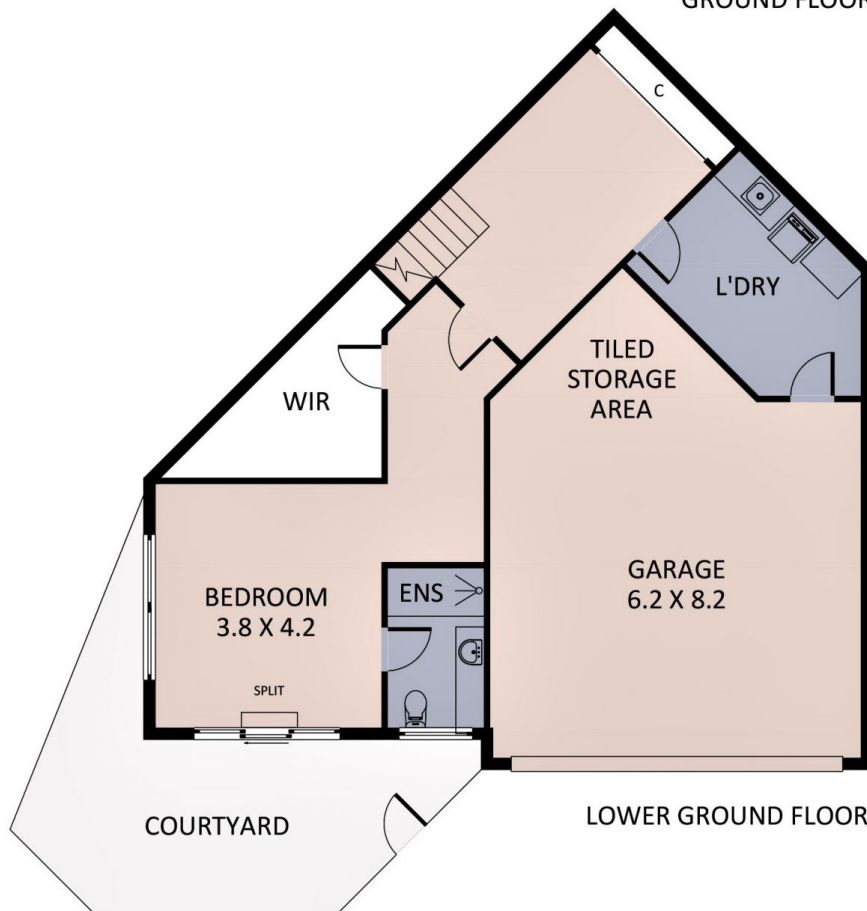
**Land Size** : 154 sqm

**View** : <https://www.ypa.com.au/7397958>



**Jason Padula**  
0402 149 436

# 2/21 Norcal Court Greenvale



Please note this is a representation only and whilst every precaution is taken to ensure we provide you with accurate information regarding this property we expressly deny responsibility for any omissions/errors contained herein.