



51 Erinbank Crescent Westmeadows VIC

3  1  2 

CONCRETE CLASSIC SOLD FOR A SUBURB RECORD BY JASON PADULA!

Go to Jason Padula Real Estate on Facebook and YouTube, for all the campaign highlights!

Price : \$ 661,000

Land Size : 549 sqm

View : <https://www.ypa.com.au/7397953>

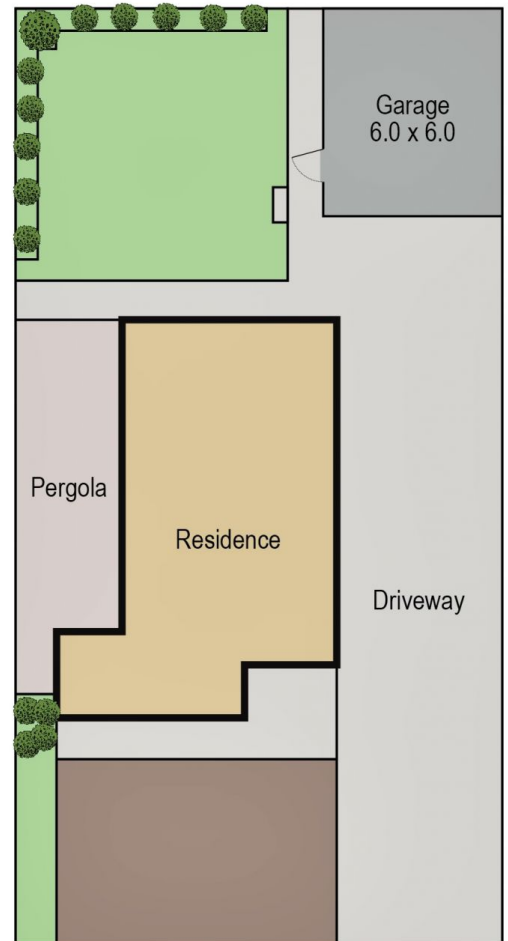
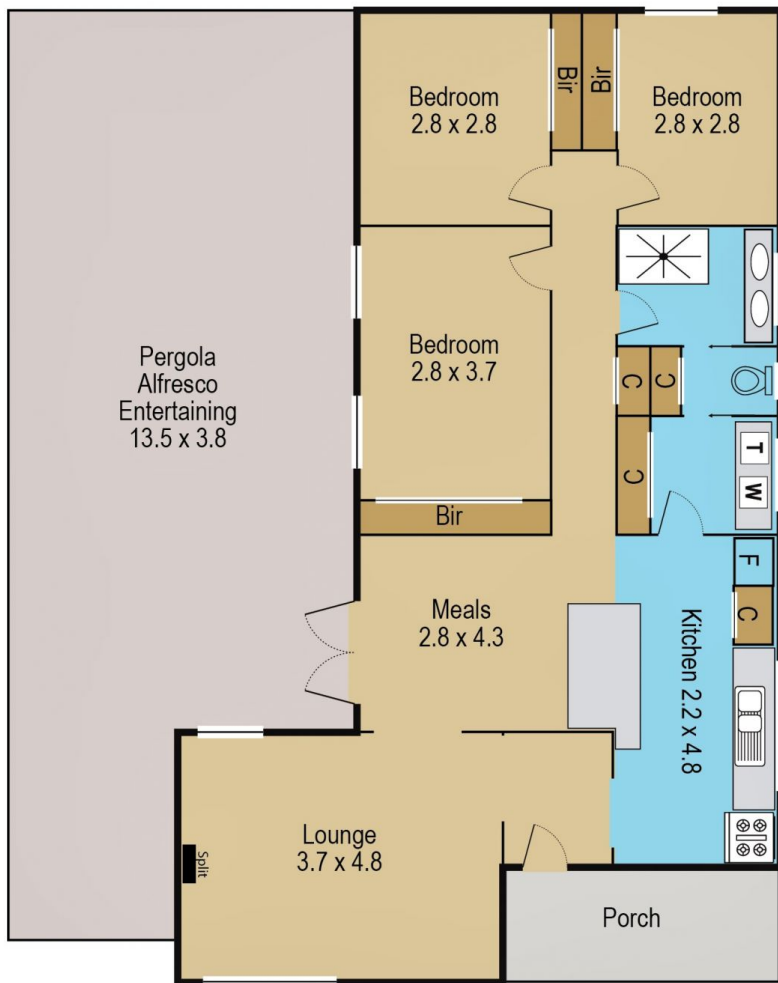
Built like a rock with concrete walls, slab floor and a smooth rendered finish, this fully renovated #3049 classic near the Dimboola Road junction is offered to the market place in pristine condition and a guided range that won't break the budget!

Set behind a high private fence with remote roller access, you could literally be anywhere in the world once you step inside.

Offering unprecedented off street parking options for up to 9 cars, as well as a new Colourbond double garage and 2 x



Jason Padula
0402 149 436



Please note this is a representation only and whilst every precaution is taken to ensure we provide you with accurate information regarding this property we expressly deny responsibility for any omissions/errors contained herein.

51 Erinbank Crescent, Westmeadows