



4/2 Catherine Avenue Tullamarine VIC

3 1 1

Welcome yourself to this stunning home in the heart of Tullamarine!

This is perfect for first home buyers, investors and downsizers.

Beaming with period features and a stunning front facade which you will love coming home to everyday this townhouse has a very accommodating floorplan with 3 well sized bedrooms two with Build-in-robos, wall heaters, windows with views and natural light, 2 toilets including one downstairs as well as single lock up garage. Kitchen has a good sized U-shape benchtop with modern appliances followed by living with sliding doors which leads to a nice private low maintenance backyard.

Great for enjoying some peace and quiet or entertaining with big high fences for excellent privacy.

Price : \$ 602,000

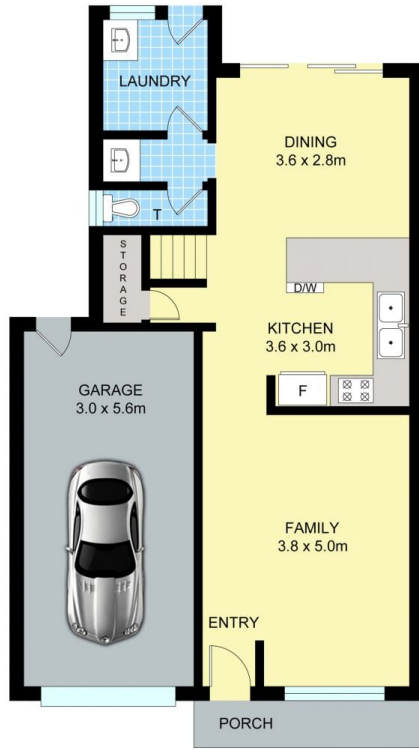
View : <https://www.ypa.com.au/7397903>



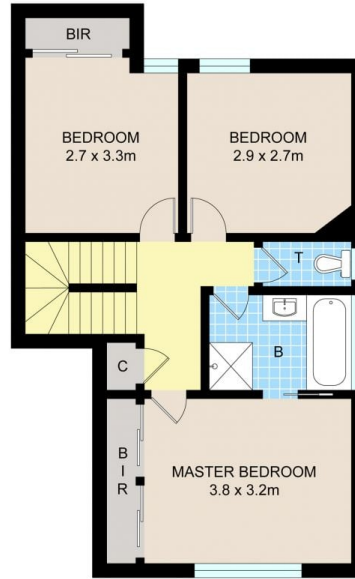
Luke Albioli
0403 700 003



Jake Lisner
0437 399 908



GROUND FLOOR



FIRST FLOOR

4/2 CATHERINE AVE, TULLAMARINE

Disclaimer: Floor plan is for marketing purposes and is to be used as a guide only. Measurements are approximate and for illustrative purposes. Interested parties should make and rely on their own enquiries or refer to contract drawings for more accurate information.