



5/20 Louise Avenue Mont Albert VIC

2  2  1 

Boutique Brand New Walk to Station
Ground Floor, Apartment 5.

Price : \$ 820,000

View : <https://www.ypa.com.au/7397854>

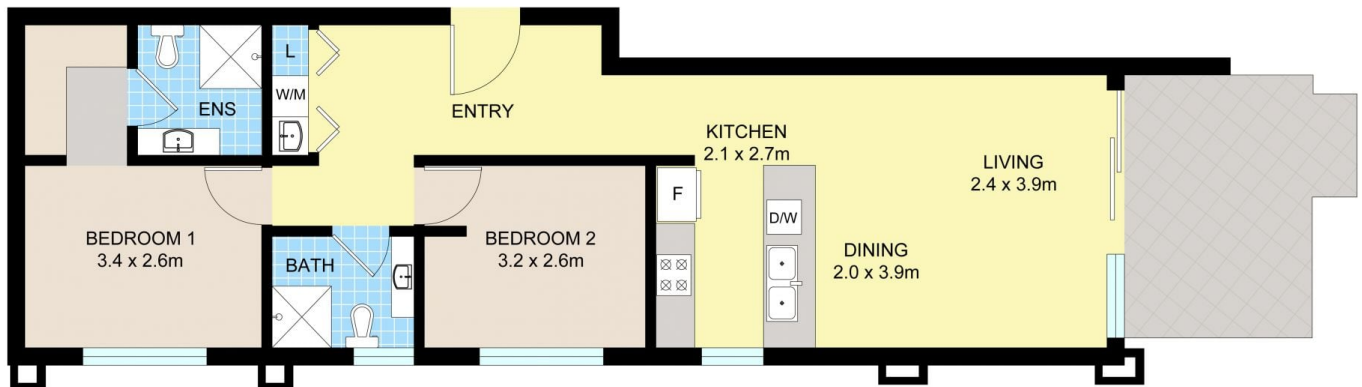
Welcome to this brand new apartment in a blue chip suburb in a very quiet street and walking distance to Mont Albert Train station and shops. Don't miss out on this rare opportunity in Mont Albert

This architecturally designed apartment has 2 levels and only has 10 in the building. Lift access and low rates make an ideal home. Inside we have quality finishes and appliances. You have your own peaceful balcony which is very private as well as your own undercover parking space with generous storage space of your own!

Radiant and vibrant scenery with a stunning front facade and private bluestone walkway, a cool modern colour scene complements this ground floor 2 bedroom residence



Jake Lisner
0437 399 908



G05/20 LOUISE AVE, MONT ALBERT

Disclaimer: Floor plan is for marketing purposes and is to be used as a guide only. Measurements are approximate and for illustrative purposes. Interested parties should make and rely on their own enquiries or refer to contract drawings for more accurate information.