

## 7 Knapdale Court Greenvale VIC

4 2 2

### King Sized Living!

Sitting high and proud in a quiet court location, this striking family home will please the whole family.

Offering 4 bedrooms plus study, large master bedroom (on ground level) with WIR and spa-ensuite, large formal living and dining leading to a large kitchen with big meals area and separate family room, plus an additional enclosed balcony upstairs which allows you to soak in the views all year round! Includes a large double garage with internal access and rear drive-through, ducted heating and cooling, gorgeous hardwood flooring, built-in cinema projector, quality SST appliances, basement storage area & space available to have your own Wine Cellar and loads more. When it comes to extra space, its got you covered there too, sitting on a generous 742sqm(approx.) allotment with a large back yard AND the bonus of parklands right across

**Price** : \$ 810,000

**Land Size** : 742 sqm

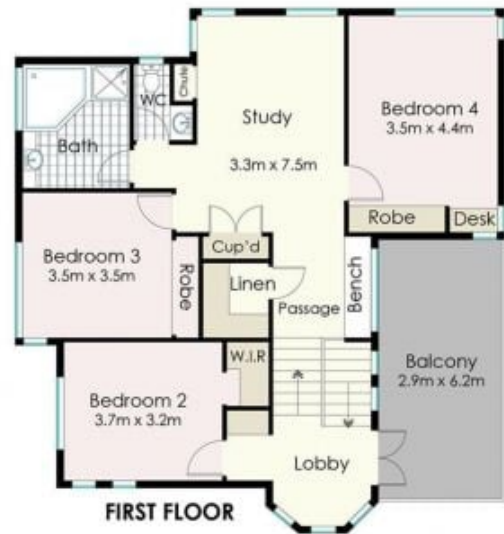
**View** : <https://www.ypa.com.au/7397751>



**Luke Albioli**  
0403 700 003



**Jeremy Pate**  
0428 085 280



## 7 Knapdale Court, Greenvale

DISCLAIMER: Floor plan is for marketing purposes and is to be used as a guide only. Measurements are approximate and for illustrative purposes. Interested parties should make and rely on their own enquiries or refer to contract drawings for more accurate information.