



## 26 Oak Leaf Street GREENVALE VIC

4  2  2 

Just when you thought it might be a good idea to build, this single storey beauty comes along. A quality build with all the hard work done, you can sit back and enjoy family time instead of all the hassles.

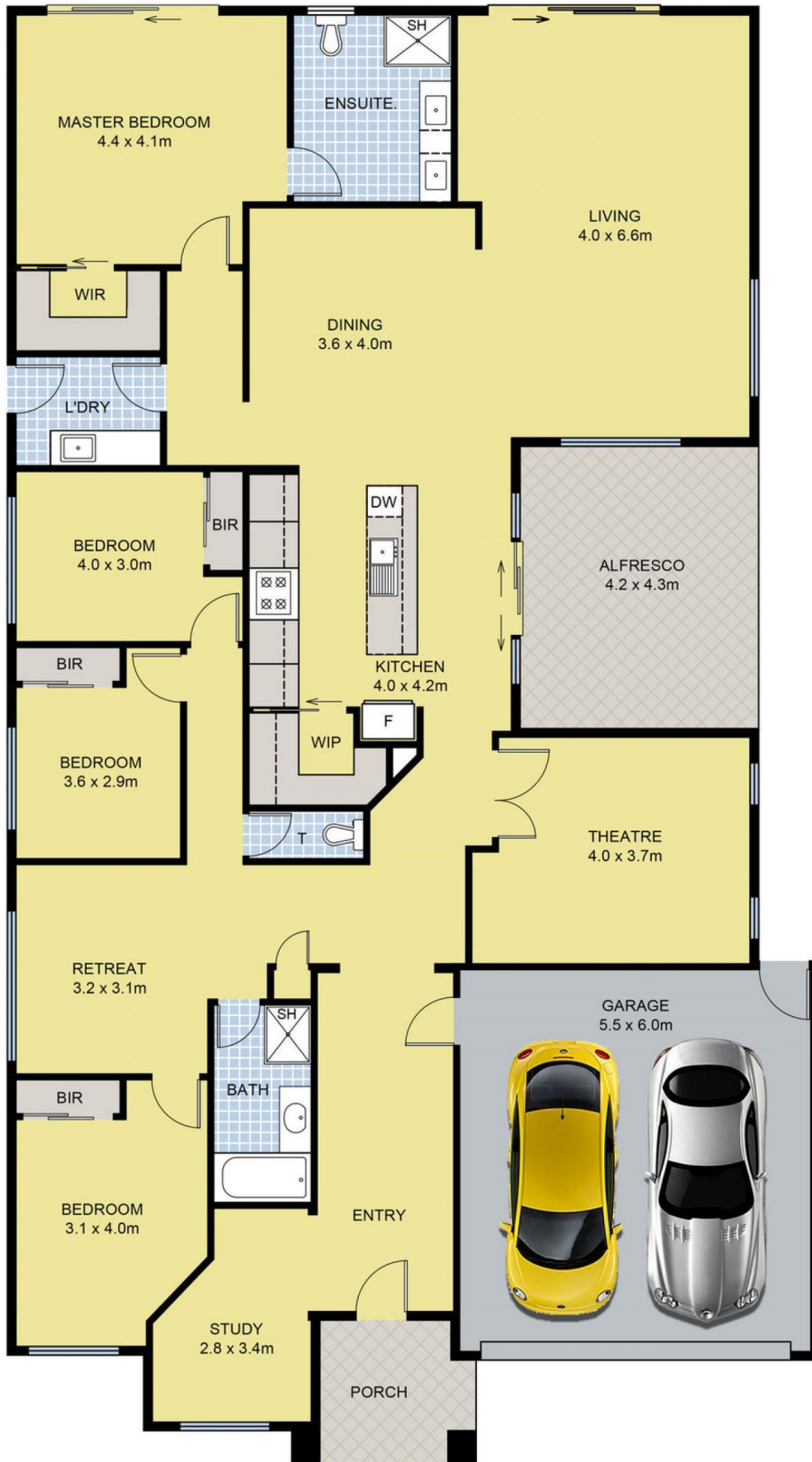
- Situated in the fast-establishing Greenvale Gardens estate
- Walking distance to the new primary school (soon to be completed).
- Offering a well-thought-out floorplan across 30 squares(approx.)
- Gorgeous european oak hardwood parquetry flooring throughout
- Grand entry and high ceilings
- 4 great sized bedrooms, master at rear with a large WIR & ensuite
- The 3 kids rooms all share a retreat

**Land Size** : 480 sqm

**View** : <https://www.ypa.com.au/7397741>



**Luke Albioli**  
0403 700 003



## 26 Oak Leaf Street, Greenvale

DISCLAIMER: Floor plan is for marketing purposes and is to be used as a guide only. Measurements are approximate and for illustrative purposes. Interested parties should make and rely on their own enquiries or refer to contract drawings for more accurate information.