



181 Erinbank Crescent ATTWOOD VIC

3  1  2 

This beautiful home will be sure to impress with all the hard work already done.

Absolutely spotless throughout, the flowing and fully renovated floorplan is ideal for any growing family or couples starting out.

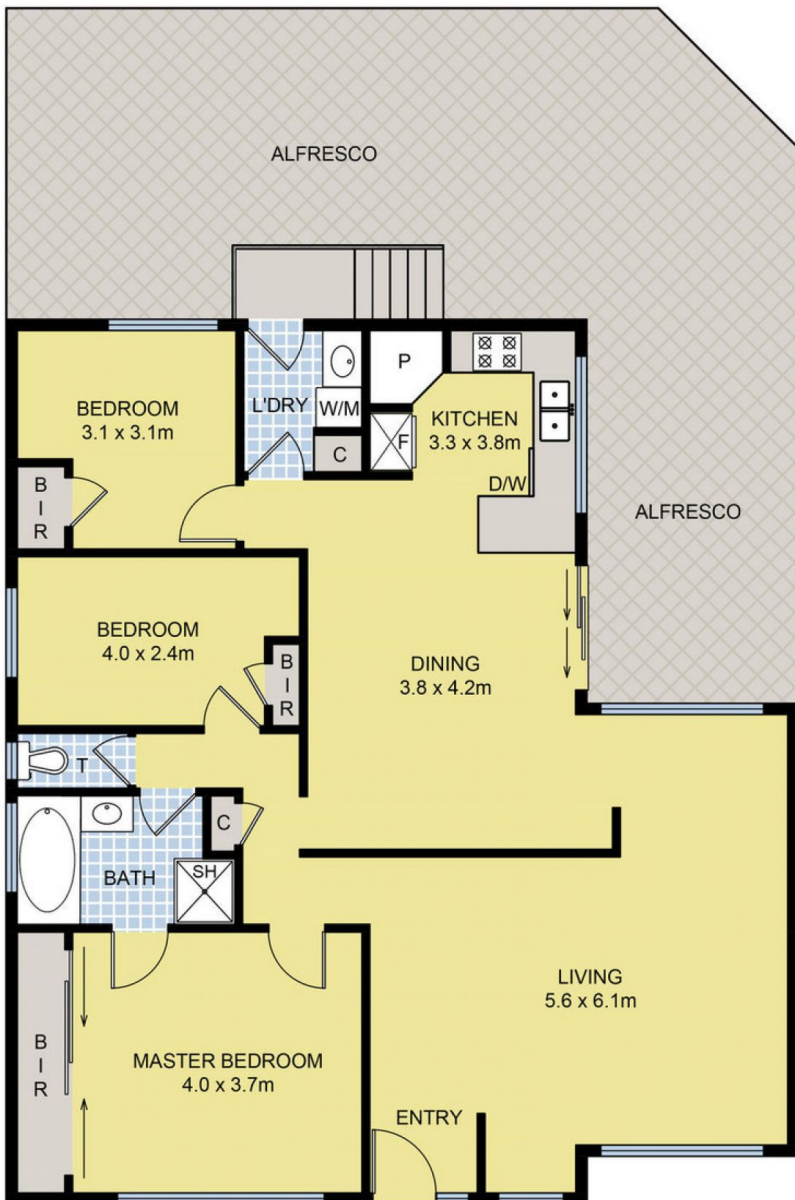
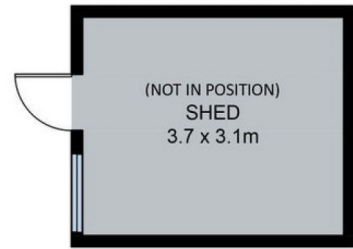
Offering 3 bedrooms (all with BIRs) and sitting on a wide allotment of 699M2 approx, enter the home through the spacious lounge area which flows into the family/dining area adjacent to the fully renovated kitchen with stainless steel appliances. The two-way family bathroom and laundry are also tastefully renovated and creature comforts including evaporative cooling, ducted heating and a separate air-conditioner complete the inside package.

Step outside and be greeted by a vast backyard with undercover alfresco area and a double garage with remote control.

Close to everything that Attwood/Westmeadows has to

Land Size : 699 sqm

View : <https://www.ypa.com.au/7397737>



181 Erinbank Crescent, Attwood

DISCLAIMER: Floor plan is for marketing purposes and is to be used as a guide only. Measurements are approximate and for illustrative purposes. Interested parties should make and rely on their own enquiries or refer to contract drawings for more accurate information.