



6 Briar Close GLADSTONE PARK VIC

4 1

Bring your paint brush and let your imagination show you what could be. This well positioned property is located in arguably the best pocket of Gladstone Park, in a lovely family-friendly court. Within walking distance to the shopping centre, this great home features 3 bedrooms, a spacious lounge with separate dining area, central bathroom and laundry, kitchen with meals area which leads outside to the great sized yard. The large garage has been converted to another couple of bedrooms and another living space, perfect for teens or older parents who need their own space. All this situated on a great sized 592sqm block, and includes hardwood flooring throughout, ducted heating, roller shutters, split system and more. This is a golden opportunity for anyone who knows the old rule, buy in the best location!

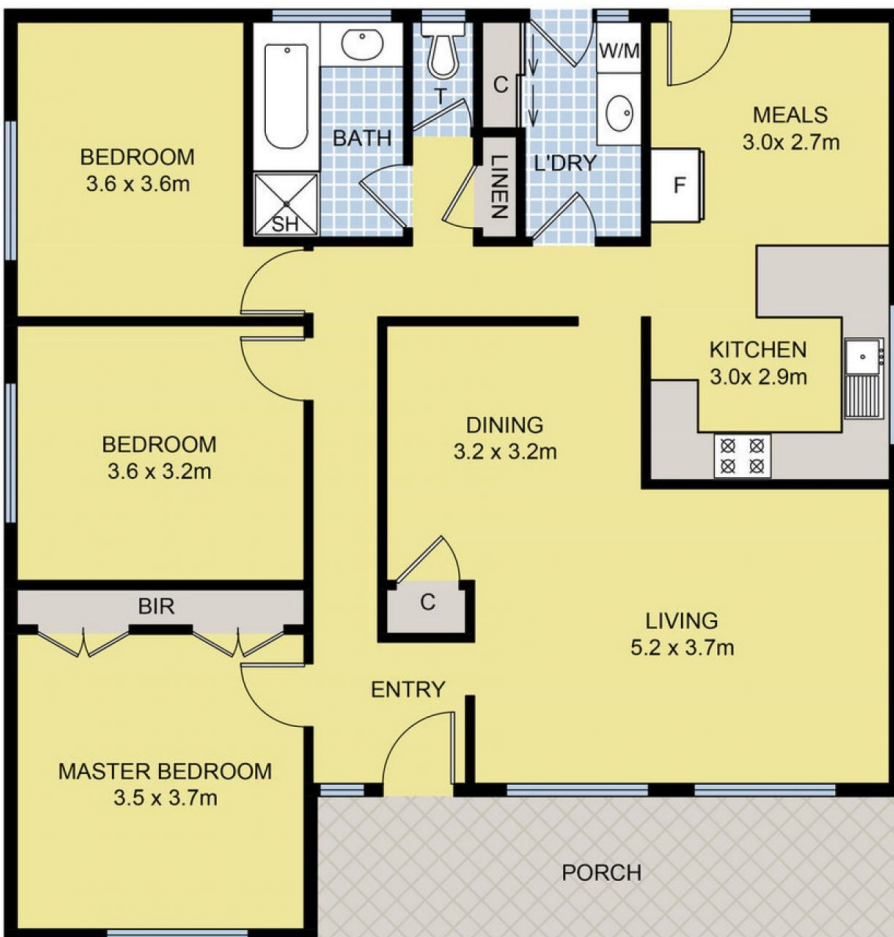
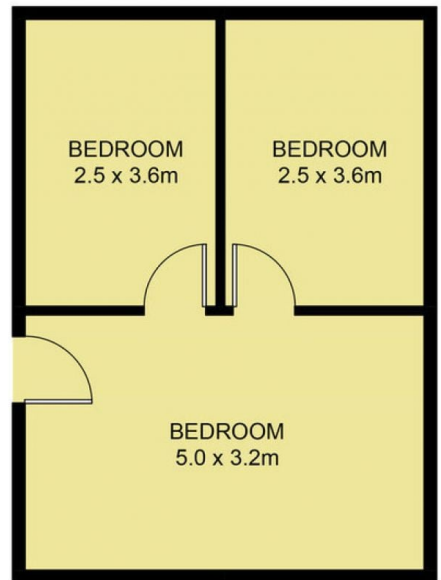
Land Size : 592 sqm

View : <https://www.ypa.com.au/7397734>



Luke Albioli
0403 700 003

Terms: 10% deposit (to be paid on auction day), 30/45/60



6 Briar Cl, Gladstone Park

DISCLAIMER: Floor plan is for marketing purposes and is to be used as a guide only. Measurements are approximate and for illustrative purposes. Interested parties should make and rely on their own enquiries or refer to contract drawings for more accurate information.