



15 Bottlebrush Road CRAIGIEBURN VIC

3 2 1

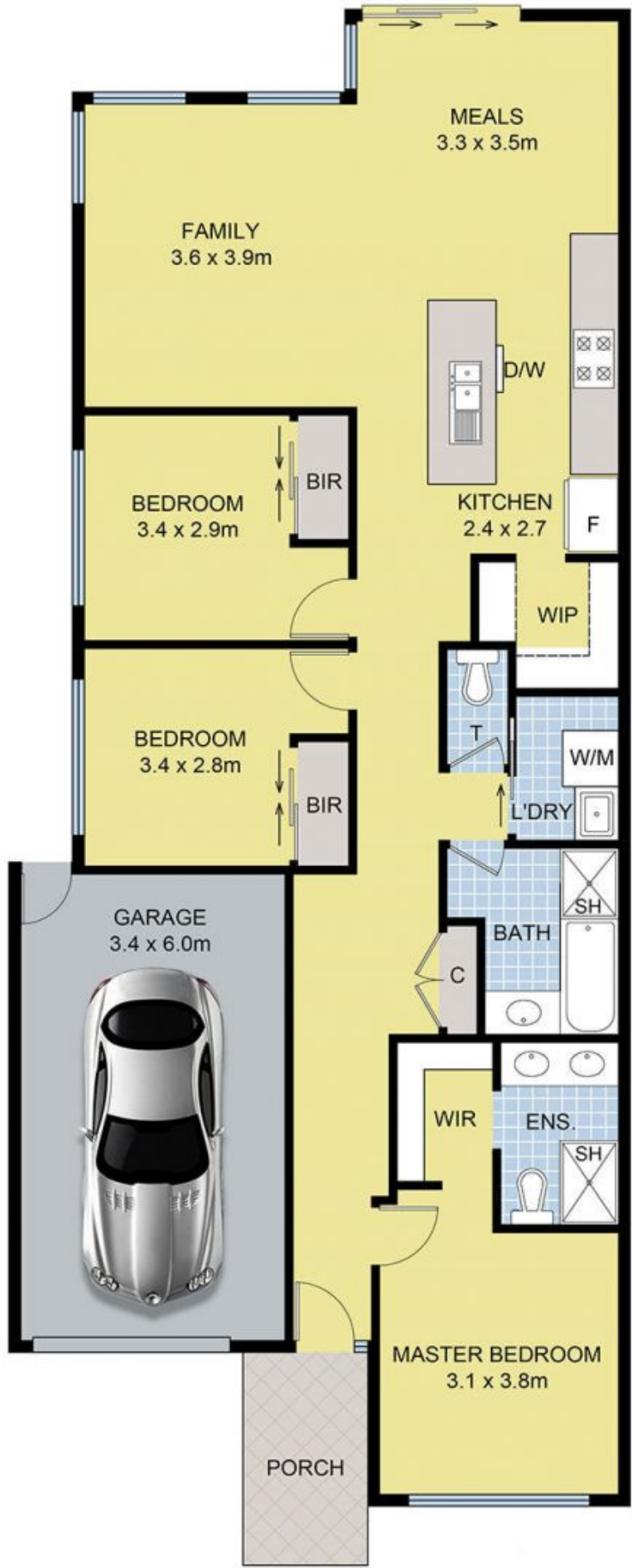
Perfect for the first home buyer or investor, soak up the good life in this contemporary three-bedroom residence situated in the peaceful highlands estate. Single-level, low maintenance in a convenient location, this property presents the perfect start for any young homeowners.

Land Size : 238 sqm

View : <https://www.ypa.com.au/7397726>

Featuring;

- Three bedrooms total, all with built in storage
- Master bedroom with full ensuite, walk through robe and exterior roller shutters
- Open living kitchen and dining area opening out to the outdoor courtyard
- Kitchen with stainless steel appliances, dishwasher and walk in pantry
- Courtyard freshly concreted with Colorbond fencing surrounding
- Main bathroom with separate bath and shower



15 Bottlebrush Road, Craigieburn