



## 261 Carrick Drive GLADSTONE PARK VIC

3  1  1 

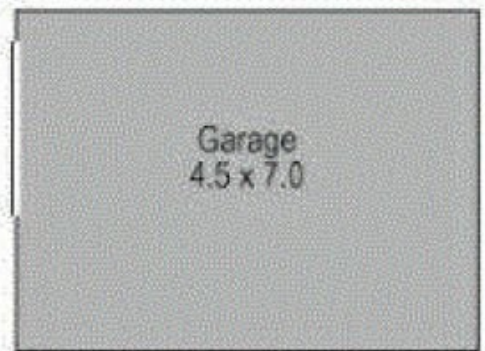
Totally transformed, this 3-bedroom home, sitting on Approx 559m<sup>2</sup> with wide frontage of Approx 21 metres, is an eye-catching; spacious entry hall that flows to open plan kitchen/meals/living accessing to outside under cover decking and manicured garden.

Featuring stainless steel appliances, dishwasher, remote roller shutters cooling/heating, spacious lock up garage and second toilet. All within close distance to shops, schools, public transport and easy access to Mickleham Rd & Tullamarine/Ring Rd Freeways.

Photo ID required.

**View** : <https://www.ypa.com.au/7397705>

# 261 Carrick Drive, Gladstone Park



Please note this is a representation only and whilst every precaution is taken to ensure we provide you with accurate information regarding this property we expressly deny responsibility for any omissions/errors contained herein.