



## 102 Venezia Promenade GREENVALE VIC

4 🚗 2 🚗 3 🚗

Meticulously presented large family home on over 700sqm (approx.) in the popular Providence Estate. Situated only a short stroll from Napoli park, within walking distance from Aitken College, this near-new family home has the lot. Offering 4 great sized bedrooms, plus a big study (or 5th bedroom), including a large master with WIR and BIRs and full ensuite. The home features a formal lounge, vast open plan living with stunning kitchen (with stone tops), large meals area, powder room, a huge separate rumpus/theatre room and upstairs theres a large retreat area for the kids. The upstairs balcony displays breathtaking city views. Outside, theres an enormous tiled outdoor entertaining area complimented by immaculate gardens. Best of all, it offers a massive 3-car garage with rear drive-thru access, so theres something special for the whole family to enjoy. Includes ducted heating and cooling, quality appliances, loads of extra storage and so much more. Why build? Its all

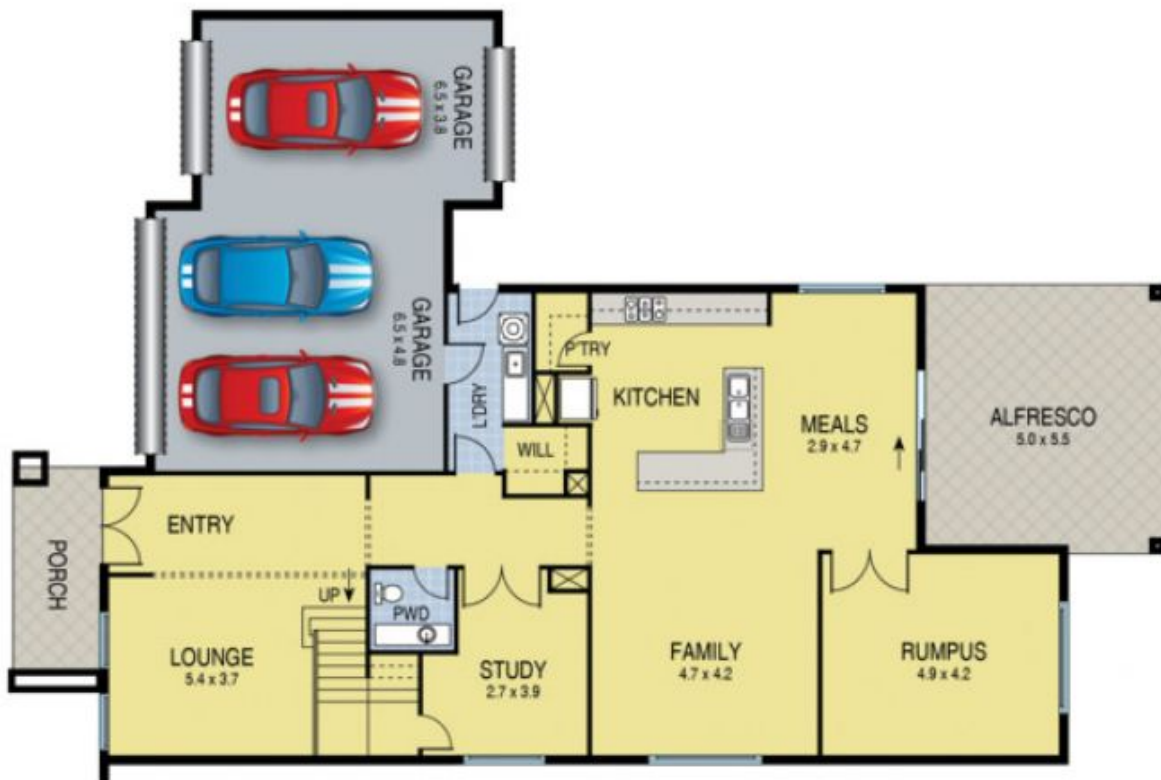
View : <https://www.ypa.com.au/7397549>



**Luke Albioli**  
0403 700 003



FIRST FLOOR



GROUND FLOOR

102 Venezia Promenade, Greenvale