



## WESTMEADOWS

The Pallida is a stand-alone four bedroom house with spacious, relaxing bedrooms. The master features a private ensuite, 3.3m long built-in robe and lots of space for extra furniture or a TV unit.

Downstairs is laid out in a large open plan design featuring a stylish U-shaped kitchen equipped with plenty of storage, ample preparation space and a breakfast bar all in one. Your convenient laundry has direct access to the side yard and the attached garage means you won't get wet going to and from the car on rainy days.

\*Ready for completion in September.

4 2 2

View : <https://www.ypa.com.au/7397483>



**Luke Albioli**  
0403 700 003

**Fittings and fixtures**

900mm stainless steel oven, cooktop and rangehood

Silver finish dishwasher

Tiled kitchen splashback

Feature timber-look laminate floor covering where nominated

Carpet and tiles in other areas

Gas ducted heating

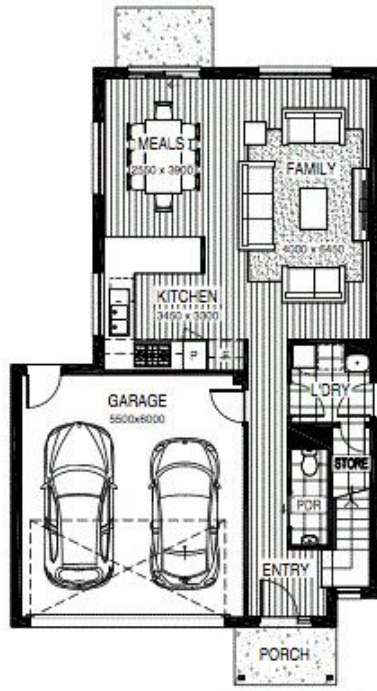
Remote control operated double garage

Landscaped front yard, seeded back yard

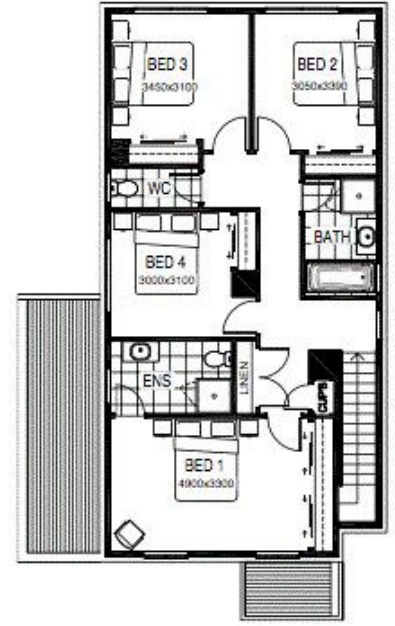
Driveway, letterbox, clothesline

Super-fast optic fibre connection providing free to air TV, and the ability to connect phone, internet and pay TV services

Pallida	m <sup>2</sup>	squares
Ground floor	72.70	7.82
First floor	92.00	9.90
Total floor area	164.70	17.73
Garage	37.10	3.99
Porch	3.50	0.39
Total	205.40	22.11



GROUND FLOOR



FIRST FLOOR