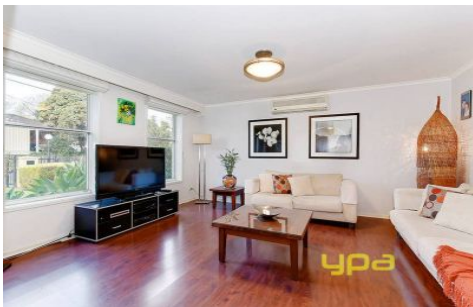


# Ypa



**69 Churchill Avenue TULLAMARINE VIC**

3 2 3

This great looking home offers more than you'd expect. Featuring 3 great sized bedrooms, master with ensuite and WIR, a large family room, step-down lounge with timber floors, bright kitchen with tiled meals area which steps out to a lovely covered Alfresco area. Outside, there's a HUGE Man-cave, perfect for the guys to come around and make a racket without disturbing the ladies. It's the perfect package for a young family, and it's ideally located, close to everything. Includes ducted heating, evaporative cooling, remote-carport (enclosed) for 3 cars, garden shed and loads of extras. Do not miss this one!

**View :** <https://www.ypa.com.au/7397319>



**Luke Albioli**  
**0403 700 003**