



14 Middleton Court Greenvale VIC

4 2 2

This immaculately maintained one-owner home is perfectly positioned at the end of a quiet family friendly court in the beautiful "Original Greenvale" location.

Sitting on a flat 700m² (approx.) allotment, this solid clinker-brick home is the perfect place to raise your family and make lasting memories. Featuring 4 generous bedrooms (master with ensuite and WIR), a spacious lounge and dining, downstairs powder room, a bright kitchen with adjoining meals and family area, central bathroom (with corner spa-bath) and laundry. Includes a double remote garage, ducted heating and cooling, solar panels and much more.

Outside offers loads of room for your kids to run wild and a covered pergola to entertain the adults. There's even side access for whatever "big toys" you may have and a cubby house for the little ones. It's a home that ticks all the boxes

Price : \$ 896,000

Land Size : 701 sqm

View : <https://www.ypa.com.au/7397210>



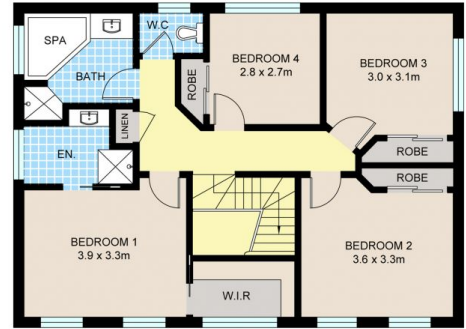
Luke Albioli
0403 700 003



Jeremy Pate
0428 085 280



GROUND FLOOR



FIRST FLOOR

14 MIDDLETON CT, GREENVALE

Disclaimer: Floor plan is for marketing purposes and is to be used as a guide only. Measurements are approximate and for illustrative purposes. Interested parties should make and rely on their own enquiries or refer to contract drawings for more accurate information.