



168 Grevillea Street Craigieburn VIC

4  2  2 

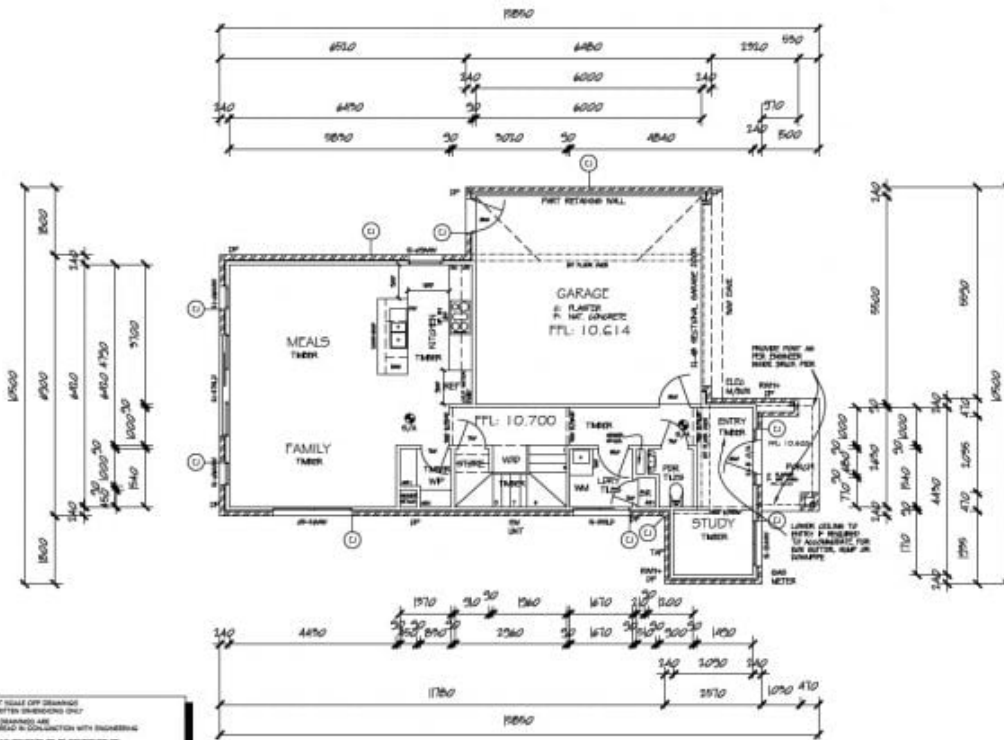
This beautiful family home comprises of:

- Master bedroom with WIR and Ensuite
- Other three bedrooms with BIR'S
- Open kitchen meals area with stone bench and walk in pantry
- 900mm cooktop
- Dishwasher
- Spacious adjoining lounge
- Rumpus room
- Study nook
- Central bathroom
- Powder room
- Evaporative cooling
- Ducted heating
- Intercom
- Under stairs storage
- Intercom

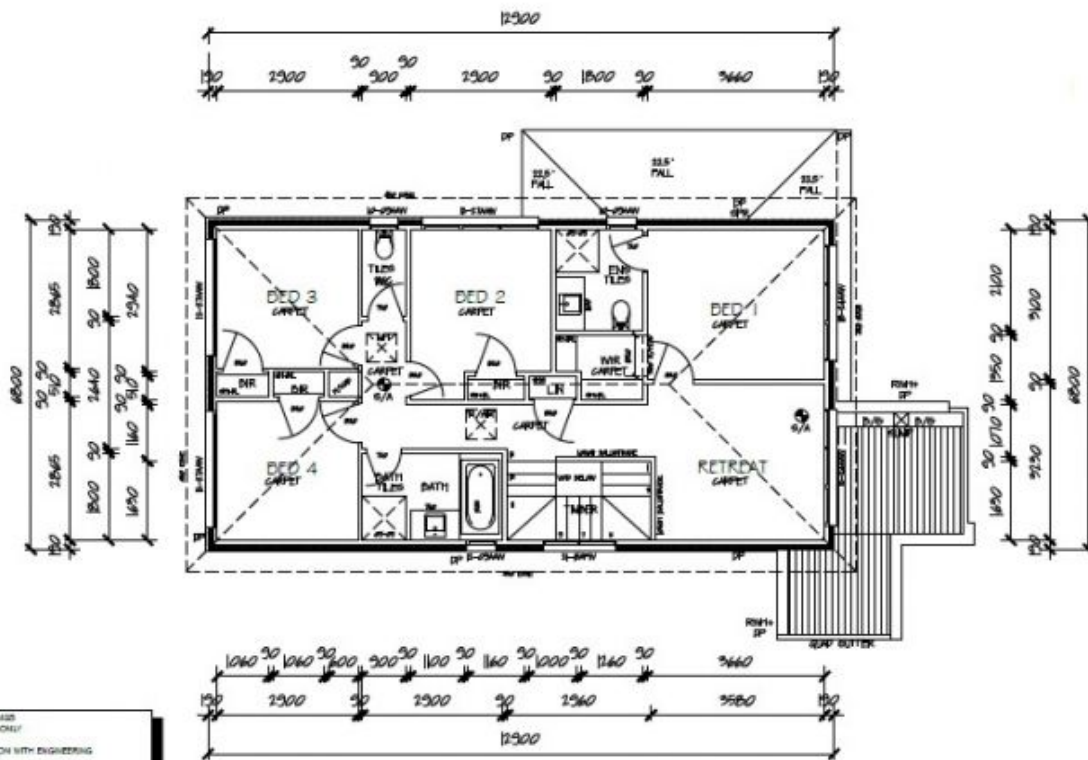
View : <https://www.ypa.com.au/7397186>



Bulent Topcu
0424 447 569



- DO NOT SCALE OFF DRAWINGS
- USE WRITTEN DIMENSIONS ONLY
- THESE DRAWINGS ARE TO BE READ IN CONJUNCTION WITH ENGINEERING
- ALL MEASUREMENTS TO BE COMPARED ON SITE PRIOR TO CONSTRUCTION



- DO NOT SCALE OFF DRAWINGS
- USE WRITTEN DIMENSIONS ONLY
- THESE DRAWINGS ARE TO BE READ IN CONJUNCTION WITH ENGINEERING
- ALL MEASUREMENTS TO BE COMPARED ON SITE PRIOR TO CONSTRUCTION

AREA TABLE	
GROUND FLOOR	73.9m ²
GARAGE	36.3m ²
PORCH	4.5m ²
FIRST FLOOR	87.7m ²
TOTAL	202.4m ² (21.8sq)