



1/81 Pecham Street Glenroy VIC

3 2 1

YPA Craigieburn proudly presents these charming units nestled in the heart of Glenroy. These well-maintained properties present the perfect opportunity for first home buyers/smart investors/downsizers.

Price : \$ 420,000

View : <https://www.ypa.com.au/7396778>

Location says it all, in a very sought-after location, across from parklands, minutes' walk from Glenroy Shopping complex, schools and public transport and only 14km from Melbourne CBD.

Unit 1
Land size : 304m2 approx
3 bed 2 bath 1 car
\$450,000 - \$490,000

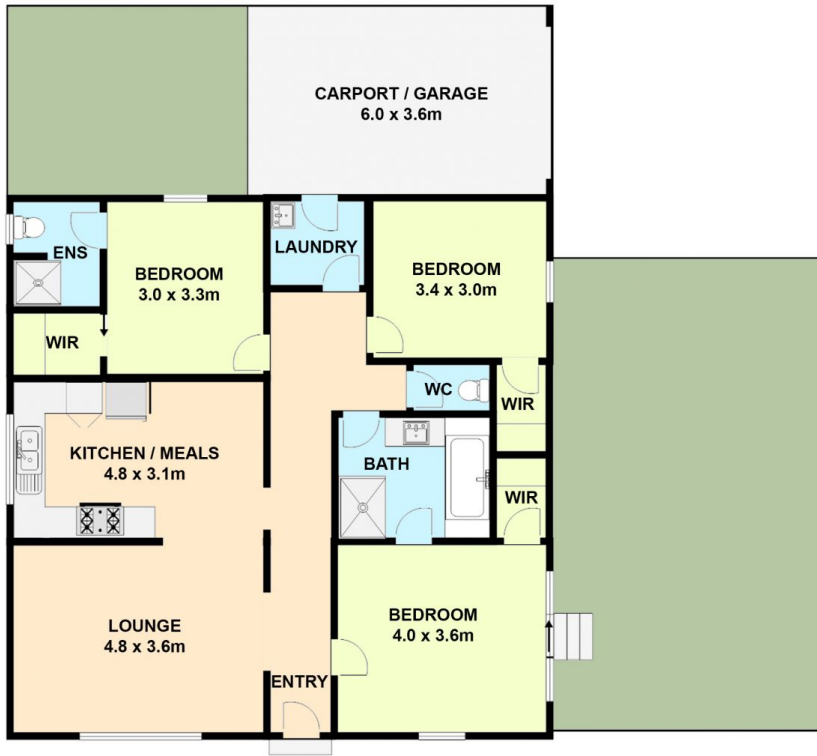


Khaled Khaled
0400 004 556



Hibah Mariam
0466 046 314

This great weatherboard home compromises of 3 great sized bedrooms, Two Master bedrooms with walk in robe



1/81 Pecham Street, Glenroy

All data and dimensions shown in this sketch are approximate.



2/81 Pecham Street, Glenroy

All data and dimensions shown in this sketch are approximate.