

10 Cranesbill Lane Mickleham VIC

5 2 8

With one of the most sought-after estates in Mickleham, an ideal escape for those seeking privacy and boundless space yet having all the amenities at walking distance- one look is all it will take to fall in love with this unique offering.

Boarded by established trees to offer ultimate privacy, this 2.65 acre approx. property provides a lifestyle that the whole family will enjoy. The beautiful entrance will entice you as soon as you walk through.

Unique in design, immaculate in presentation and a natural elegance that will leave a lasting impression, this stunning family home showcases an exceptional standard of living and is sure to impress the most discerning buyer.

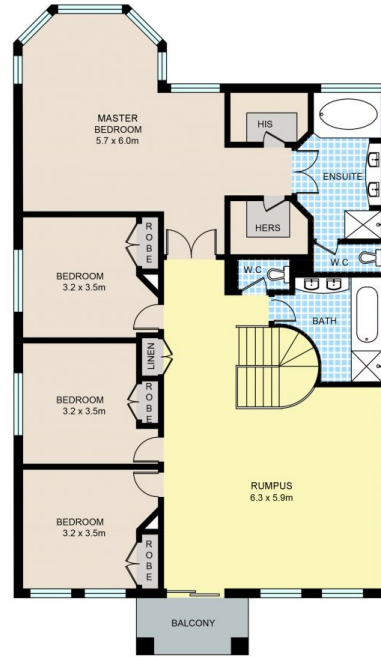
Price : \$ 2,602,000
Land Size : 2.65 Acres
View : <https://www.ypa.com.au/7396774>



Khaled Khaled
 0400 004 556



GROUND FLOOR



FIRST FLOOR

10 CRANESBILL LN, MICKLEHAM

Disclaimer: Floor plan is for marketing purposes and is to be used as a guide only. Measurements are approximate and for illustrative purposes. Interested parties should make and rely on their own enquiries or refer to contract drawings for more accurate information.