

56 Loudon Circuit Craigieburn VIC

4  2  2 

Enter the street with carefully maintained and excellently presented gardens. The character alone entices you to come inside. An absolute standout, this 4-bedroom, 2-bathroom, 2 living zones residence merges next-level perfection throughout a brilliantly conceived layout.

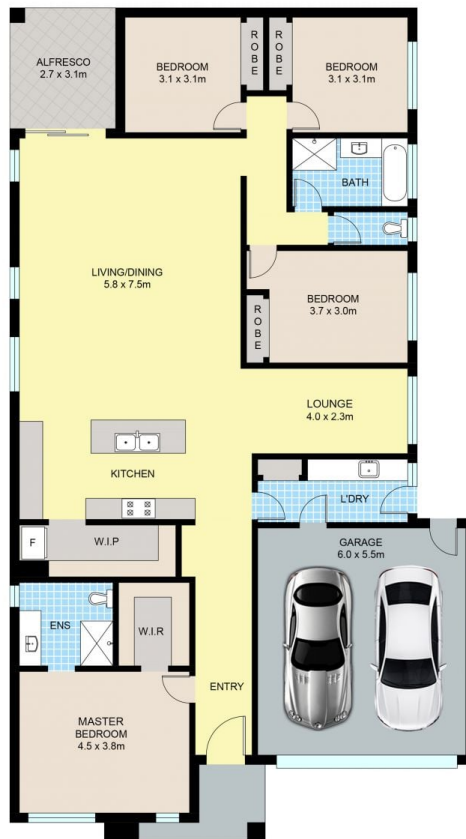
Showcasing light filled spaces throughout, the easy living floor plan opens to a floorboard entry flowing through to a spacious formal living zone, secondary living and open plan dining. The hostess kitchen features 40ml stone benchtops, 900ml stovetop, dishwasher, ample cupboard space and walk in butlers pantry. The beautiful home comprises of four bedrooms, with floor boards and BIR's -including a spacious master with walk in robe and ensuite with double vanity. All remaining bedrooms are serviced by a central bathroom with bathtub and separate toilet.

Price : \$ 785,000

View : <https://www.ypa.com.au/7396759>



Abdel Al Bikai
0476 888 808



56 LOUDON CCT, CRAIGIEBURN

Disclaimer: Floor plan is for marketing purposes and is to be used as a guide only. Measurements are approximate and for illustrative purposes. Interested parties should make and rely on their own enquiries or refer to contract drawings for more accurate information.