



66 Wisteria Avenue Craigieburn VIC

4 2 2

A rare opportunity exists to secure a spectacular modern family home situated in Craigieburn. This exceptional property offers style, comfort, an abundance of living zones and situated within local amenities.

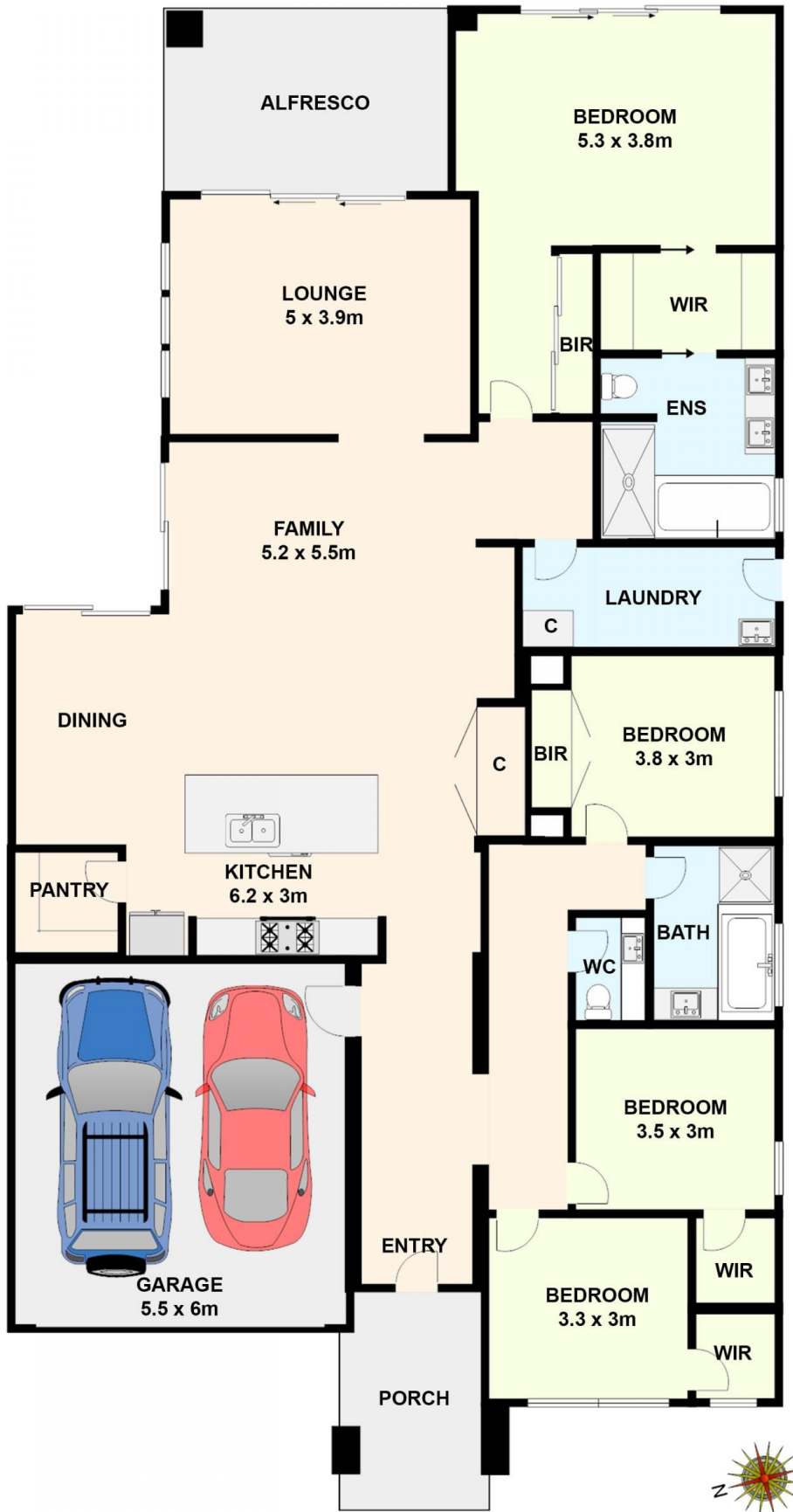
Price : \$ 795,000
Land Size : 512 sqm
View : <https://www.ypa.com.au/7396665>

This beautiful Henley Home comprises of two living zones including a formal living and lounge room, 4 bedrooms including a spacious master bedroom with a his and hers WIR, ensuite with double sink, your own Jacuzzi and an extra bonus to enter the spacious rear yard via a sliding door. Remainder of the 2 bedrooms with WIR and 1 bedroom with BIR serviced by a central bathroom with bathtub.

Welcoming the heart of the home is the beautiful and modernised open plan kitchen comprising of stone benchtops, walk in pantry, stainless steel appliances



Eddi Bagdadi
0432 208 933



66 WISTERIA AVENUE, CRAIGIEBURN

All data and dimensions shown in this sketch are approximate.