

### 3 Beechworth Avenue Greenvale VIC

7  4  2 

Exclusively positioned and immediately impressive from the moment you step into the opulent entry, this grand family home makes a lavish statement with palatial proportions, multiple living zones and fine finishes flowing throughout.

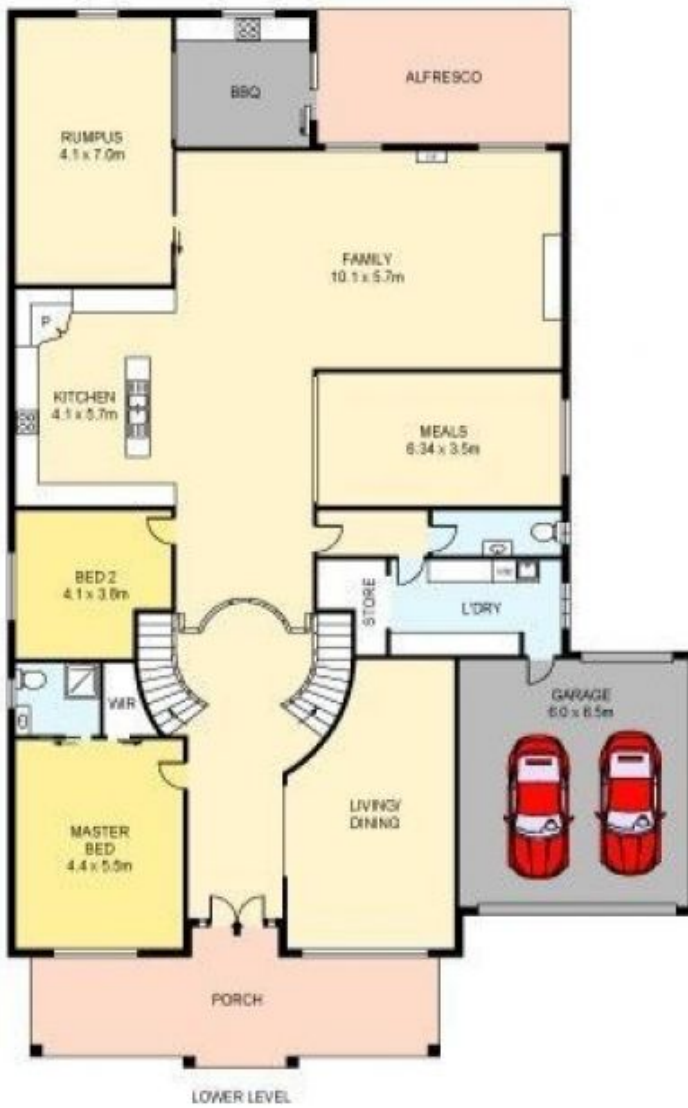
Brilliantly located with city views and every amenity close by. It's where large-scale living spaces are luxuriously appointed, with classic Design. Timeless indulgence is at the heart of every room, including the deluxe entry foyer with porcelain tiles, the opulent lounge and banquet room adorned with the finest silk window furnishings, a large family room full of light and bespoke features, casual dining area and granite kitchen bench top and stainless-steel appliances.

This is the ultimate family home on a great size allotment, with 7 generous size bedrooms plus a study/office and 4

View : <https://www.ypa.com.au/7396496>



**Khaled Khaled**  
0400 004 556



Scale in metres, indicative only. Dimensions are approximate. All information contained herein is gathered from sources we believe to be reliable. However we cannot guarantee its accuracy and interested persons should rely on their own enquiries.

INT : 600m<sup>2</sup>



3 Beechworth Avenue, Greenvale