



## 13 Brearley Place ROXBURGH PARK VIC

3 2 2

Located in a quiet street where neighbours greet you by name. This home represents a combination of what makes Victorian architecture so celebrated, with period detailing being the focal point of the facade whilst inside you will find sophisticated craftsmanship making this home a standout from the rest.

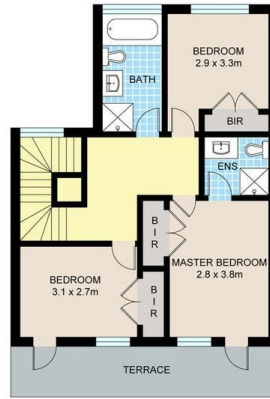
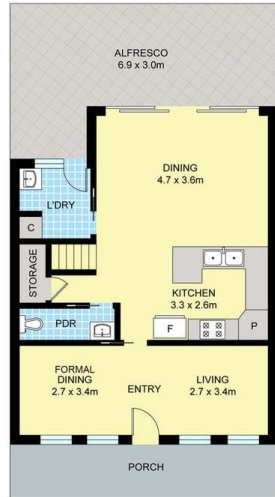
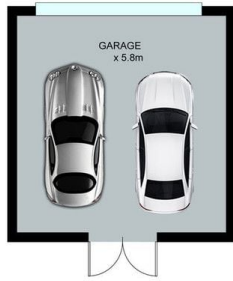
The floorplan caters for every buyer with a formal living upon entry. A generous size master suite with a BIR and Ensuite and access to your very own balcony. Remaining sleeping quarters each fitted with a BIR.

The light-filled ground level comprises of a substantial size kitchen with ample cupboard space making this zone the heart of the home, completed by the versatile lounge that flows effortlessly into both the kitchen and outdoor area.

View : <https://www.ypa.com.au/7396474>



**Khaled Khaled**  
0400 004 556



## 13 BREARLY PL, ROXBURGH PARK

Disclaimer: Floor plan is for marketing purposes and is to be used as a guide only. Measurements are approximate and for illustrative purposes. Interested parties should make and rely on their own enquiries or refer to contract drawings for more accurate information.