

## 12 Hayle Court CRAIGIEBURN VIC

3  1  2 

This amazing 3 bedroom house is sitting on a massive 749 sqm land approx! Enjoy the benefits of living in a central location close to schools, shops and public transport.

**Land Size** : 749 sqm  
**View** : <https://www.ypa.com.au/7396461>

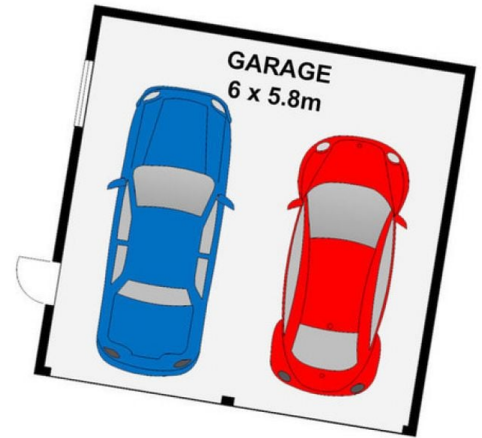
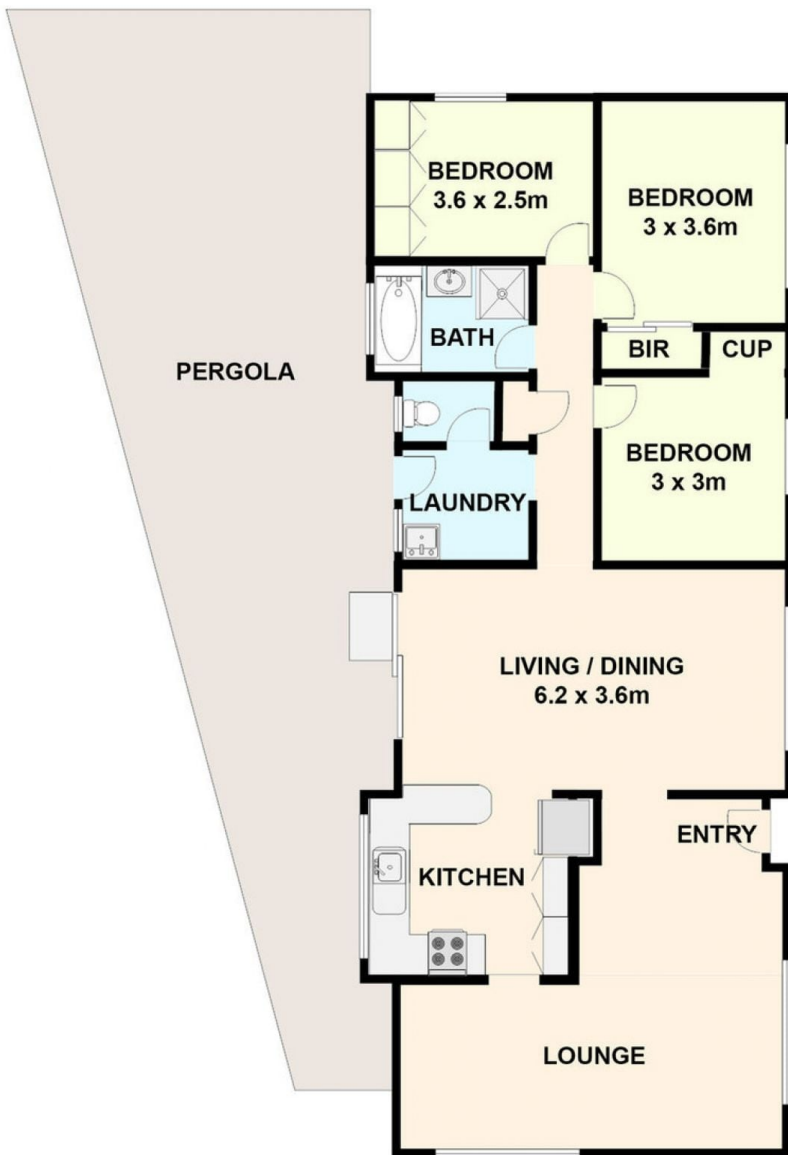
Step inside and you will appreciate the wide open spaces and generous living accommodation. Comprising of 3 bedrooms, all with built in robes, serviced by a central bathroom.

Slide open the back door and enjoy the very best of outdoor living. The alfresco entertaining area can be fully enclosed with a jacuzzi over-looking to your generous size rear yard with garden shed. Other features include heating, cooling, double garage.

With so much on offer, words simply do not do this home justice. You must inspect to fully appreciate all it has to



**Eddi Bagdadi**  
**0432 208 933**



**12 HAYLE COURT, CRAIGIEBURN**

*All data and dimensions shown in this sketch are approximate*