



11 Gully Way CRAIGIEBURN VIC

4 2 2

Set behind landscaped gardens in a sought-after Craigieburn pocket that is located within only walking distance from Craigieburn Central, Craigieburn Junction, Parklands, Cafes, Schools, Public Transport and much much more, all your local amenities at your fingertips.

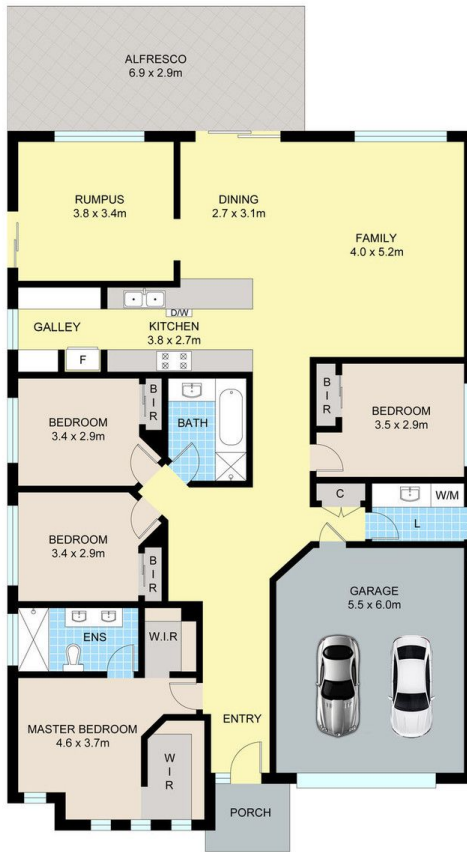
This immaculate family home presents a perfect opportunity to those seeking the ideal blend of a low maintenance lifestyle and a location that is within walking distance to all local amenities. Four bedrooms, two bathrooms, open plan meals and family living stretching out from a kitchen showcasing on trend and modern finishes with a walk in pantry and ample cupboard space.

Upon entry you will be greeted by a spacious master bedroom where you will feel in absolute harmony an adjoining full ensuite with a his and hers vanity set,

View : <https://www.ypa.com.au/7396454>



Eddi Bagdadi
0432 208 933



11 GULLY WAY, CRAIGIEBURN

Disclaimer: Floor plan is for marketing purposes and is to be used as a guide only. Measurements are approximate and for illustrative purposes. Interested parties should make and rely on their own enquiries or refer to contract drawings for more accurate information.