



## 6 Salcombe Court CRAIGIEBURN VIC

3  1  2 

The well-maintained garden and neatly cut front lawn immediately signal that this is a much loved family home, which is likely to be the same for the next generation of owners.

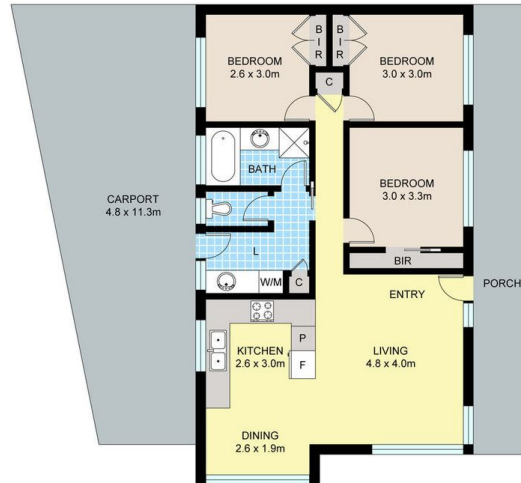
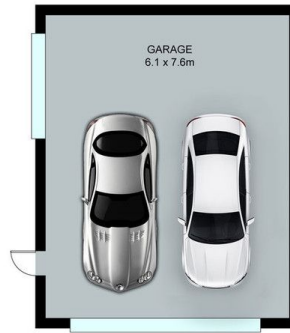
Situated on a generous allotment of approx. 658m<sup>2</sup>, with plenty of scope to either keep the house and build a unit out the back (STCA) or simply build 3 brand new units (STCA)....there is SO much to work with.

The home comprises of 3 generous size bedrooms, all with built in robes and serviced by a central bathroom. The amazing floorplan includes a renovated open plan kitchen with stone bench tops, ample cupboard space, a living/meals area and a generous size open living.

**Land Size** : 658 sqm  
**View** : <https://www.ypa.com.au/7396432>



**Eddi Bagdadi**  
**0432 208 933**



6 SALCOMBE CT, CRAIGIEBURN

Disclaimer: Floor plan is for marketing purposes and is to be used as a guide only. Measurements are approximate and for illustrative purposes. Interested parties should make and rely on their own enquiries or refer to contract drawings for more accurate information.