

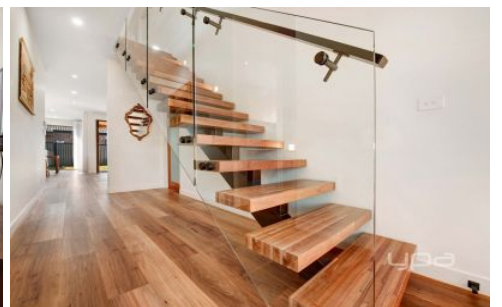


ypa

Our properties are currently available to view by appointment only.

Please contact the agent below to arrange an appointment.

www.ypa.com.au



261 Marathon Boulevard CRAIGIEBURN VIC

4 2 2

Experience the luxury of this masterpiece that captures the very essence of quality workmanship. Finished to perfection and attention to detail, designed and created for space, comfort and enjoyment in the Highlands Estate.

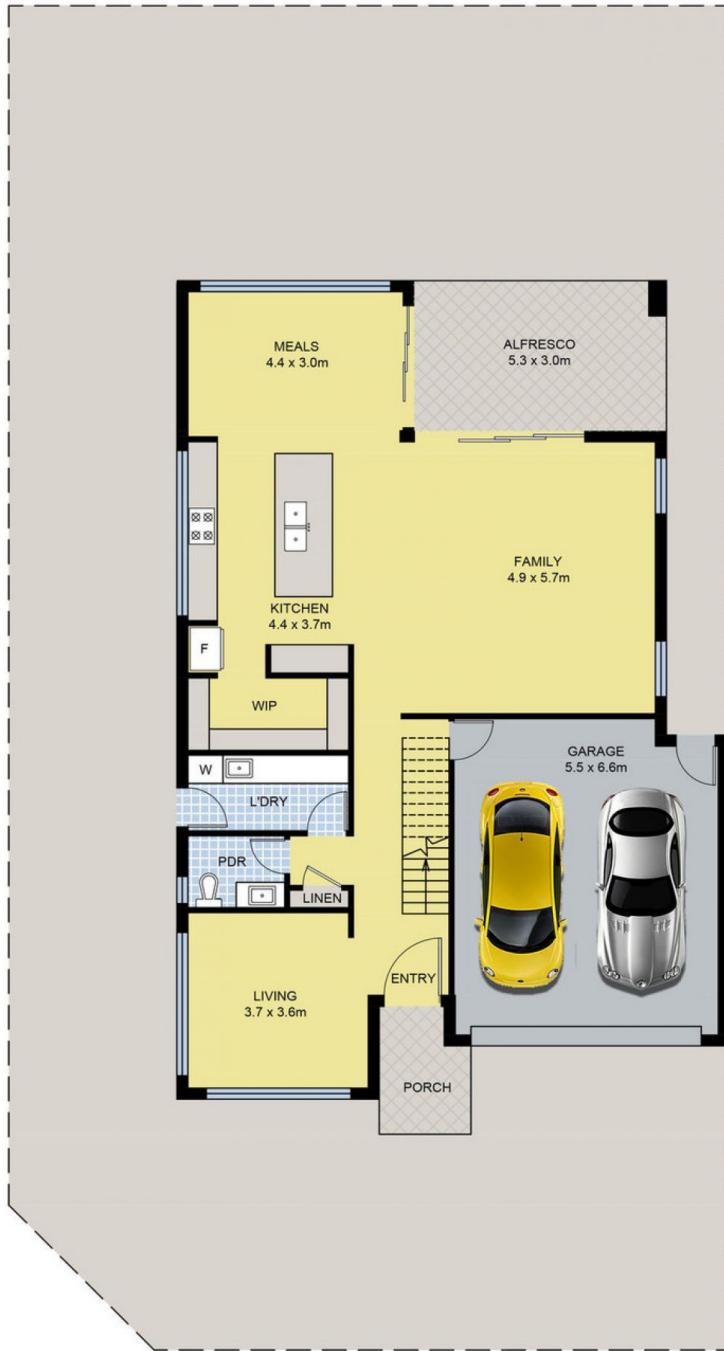
Showcasing a striking facade, with commanding street presence, a generous and practical floor plan, with an abundance of features brilliantly spread out over multiple levels. This architecturally designed, lavish and beautifully presented home has multiple living zones that will appeal to larger families with growing needs or extended families who wish to enjoy an enviable lifestyle in highly desirable location.

This prestigious 4 bedroom home comprises of two bathrooms and a separate powder room. Superbly proportioned with high ceilings, this unrivalled masterpiece

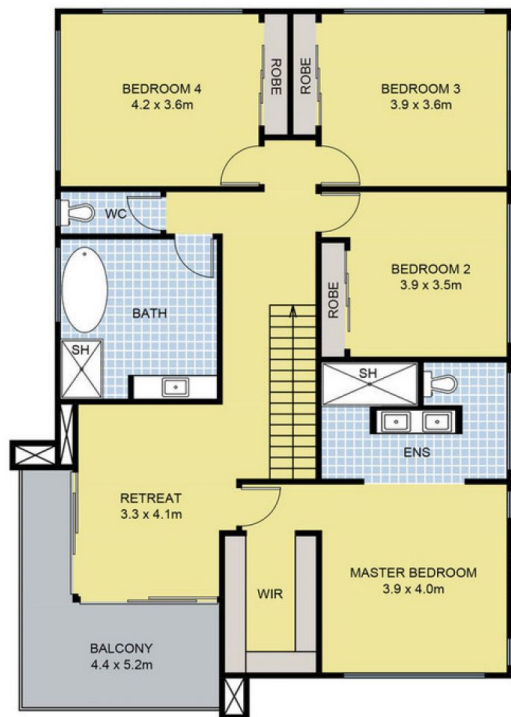
View : <https://www.ypa.com.au/7396428>



Eddi Bagdadi
0432 208 933



Ground Floor



First Floor

261 Marathon Blvd, Craigieburn

DISCLAIMER: Floor plan is for marketing purposes and is to be used as a guide only. Measurements are approximate and for illustrative purposes. Interested parties should make and rely on their own enquiries or refer to contract drawings for more accurate information.