



122 Bridgewater Road CRAIGIEBURN VIC

3 2 2

This amazing 3 bedroom house is sitting on a massive 665 sqm land approx! Enjoy the benefits of living in a central location close to schools, shops and public transport.

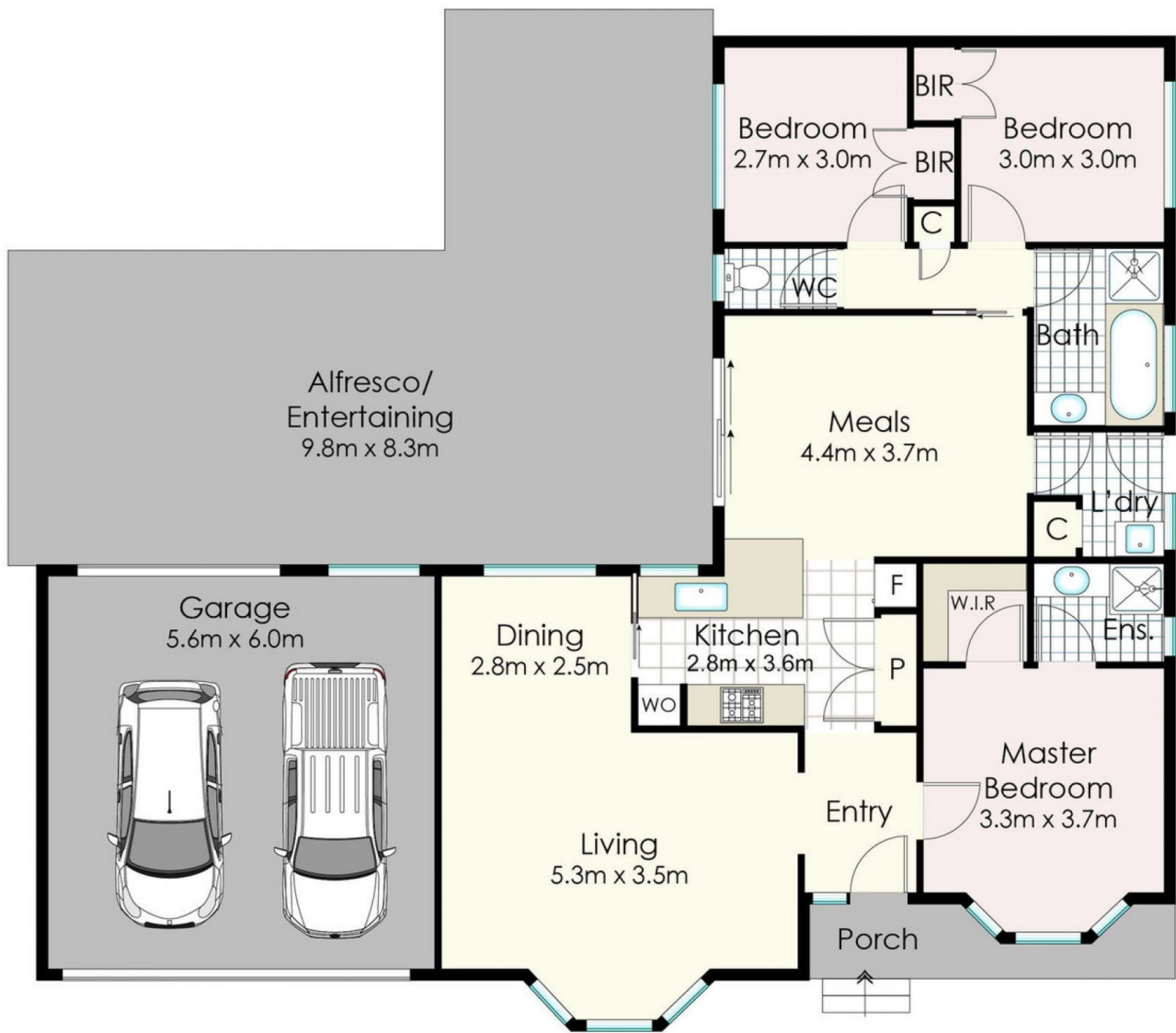
Land Size : 665 sqm
View : <https://www.ypa.com.au/7396420>

Step inside and you will appreciate the wide open spaces and generous living accommodation. Comprising of 3 bedrooms, master with WIR & ensuite- Remaining bedrooms all with built in robes, serviced by a central bathroom.

Slide open the back door and enjoy the very best of outdoor living. The alfresco entertaining area can be fully enclosed with quality cafe style blinds over-looking to your generous size rear yard surrounded by fruit trees. Other features include heating, cooling, double garage with drive through access to the rear yard.



Eddi Bagdadi
0432 208 933



122 Bridgewater Road, Craigieburn

DISCLAIMER: Floor plan is for marketing purposes and is to be used as a guide only. Measurements are approximate and for illustrative purposes. Interested parties should make and rely on their own enquiries or refer to contract drawings for more accurate information.