



178 Central Park Avenue Craigieburn VIC

3  2  2 

The wait is over with this amazing opportunity- Tailor made for insightful investors or prospective homeowners looking to dive into the marketplace. With its unique layout and high-quality finishes, the lucky occupant will be able to utilise the maximum amount of space on offer.

Comprising of three large bedrooms, master featuring walk in robe and en-suite and remaining bedrooms with BIR serviced by a central bathroom.

A meticulously designed kitchen fitted with ample cupboard space and a walk in pantry, plus a living area that leads into a low maintenance rear yard that provides the perfect opportunity for entertaining guests.

Let's not forget about the location! This beautiful home is within close distance to major amenities such as Waterside

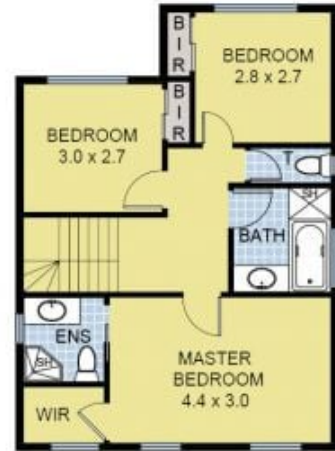
View : <https://www.ypa.com.au/7396378>



Eddi Bagdadi
0432 208 933



GROUND FLOOR



FIRST FLOOR

178 Central Park Ave, Craigieburn