



## 10 Northstead Way CRAIGIEBURN VIC

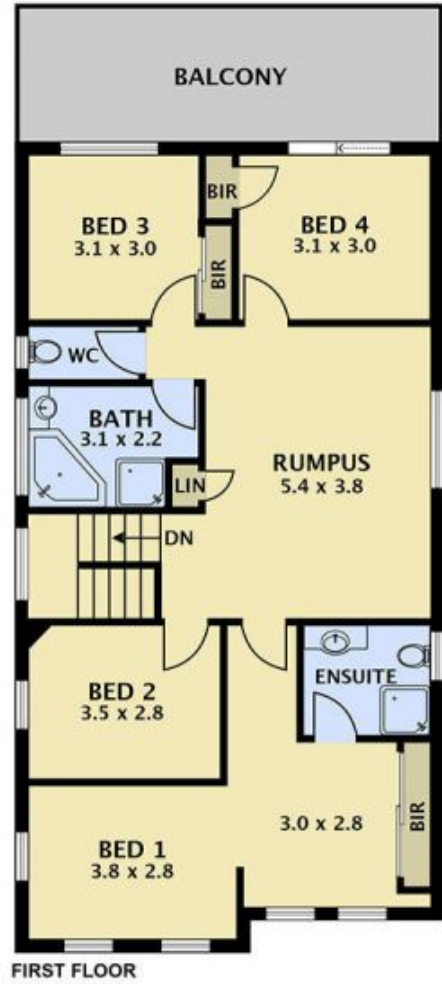
5 2 1

This stylish double storey has everything you would expect in a family home. With a great sense of space and light, the search may well be over. Entertaining will be made easy with living areas at the front and rear of the property with an opening on to a pergola area.

With walking distance to Mother Teresa Catholic Primary School and Orlig Field, this home is perfectly positioned for young families and investors. While its easy access to Public Transport, Highlands Shopping Centre and major arterials including the Grand Blvd and Hume Freeway makes life easy for all.

Other highlights include a well-appointed kitchen with stainless steel cooking appliances, ample cupboards, storage, dishwasher, ducted gas heating, Spa, 2 x powerful split air-conditioning systems on ground floor, Evaporative

**View** : <https://www.ypa.com.au/7396365>



Disclaimer. Please note plans are indicative only and not drawn to exact scale. All dimensions are approximate. Potential buyers view the property in person.