



33 Bowen Street McCrae VIC

4  3  4 

YPA Dromana is proud to present this home, perched high in the tree tops of McCrae, offering peace and privacy. Certain to capture your hearts!

Land Size : 1346 sqm

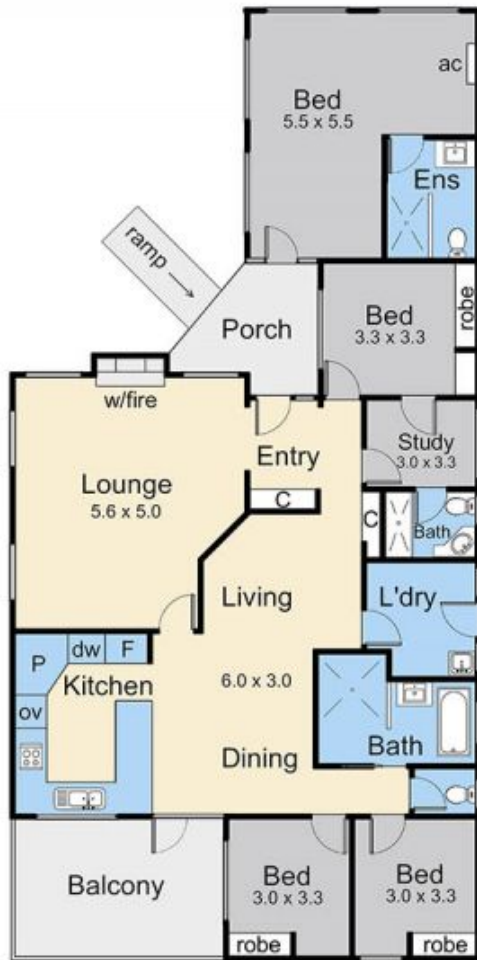
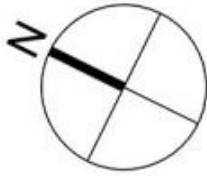
View : <https://www.ypa.com.au/7395579>

Featuring:

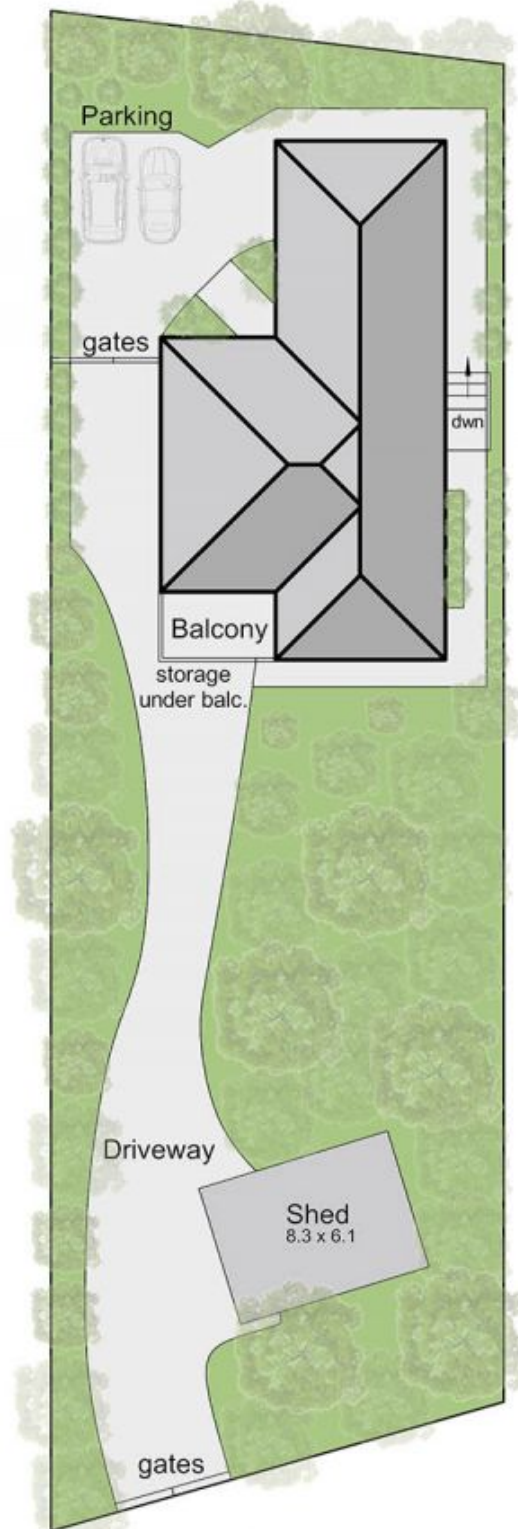
- multipurpose room with en-suite and separate entry. Ideal as a fourth bedroom or to be used as a work from home space
- master bedroom in the main home with built in robe and en-suite
- plus two further bedrooms with built in robes
- study area



Sophie Peters
03 5981 9155



Floor Plan



Site Plan

33 Bowen Street, McCrae

This floorplan is for illustration purposes only and no warranty is given to its accuracy. Purchasers are advised to carry out their own investigations. Produced by **realitywriters** (03) 5970 2222