

## 25 Prescott Avenue Safety Beach VIC

2 1

DREAM BLOCK within approx. 380 meters to the beach. Approx. 5 minutes' walk to the Golf Course. Mount Martha Cove waterways, Safety Beach and Dromana shops, restaurants and wineries, and everything else the Mornington Peninsula has on offer are located within convenient reach.

The original 2 to 3 bedroom single-level home is neat throughout and offers scope to lease out or live in while you embark on its next phase.

Featuring:

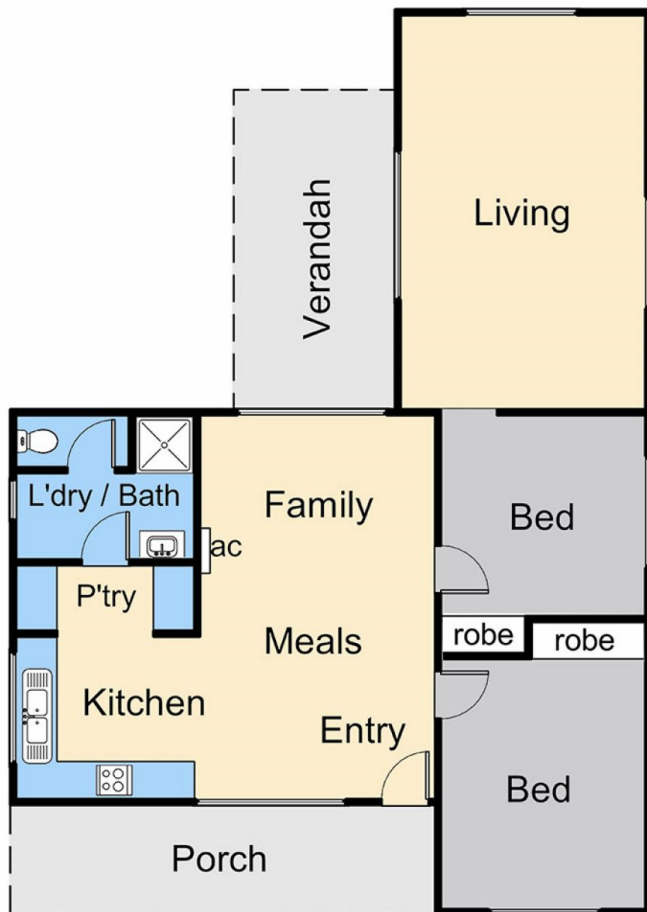
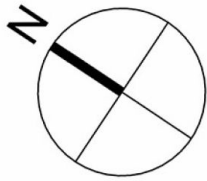
? Classic Beach House on an approx. 889 m2 flat allotment

? Sparkling kitchen and bathroom

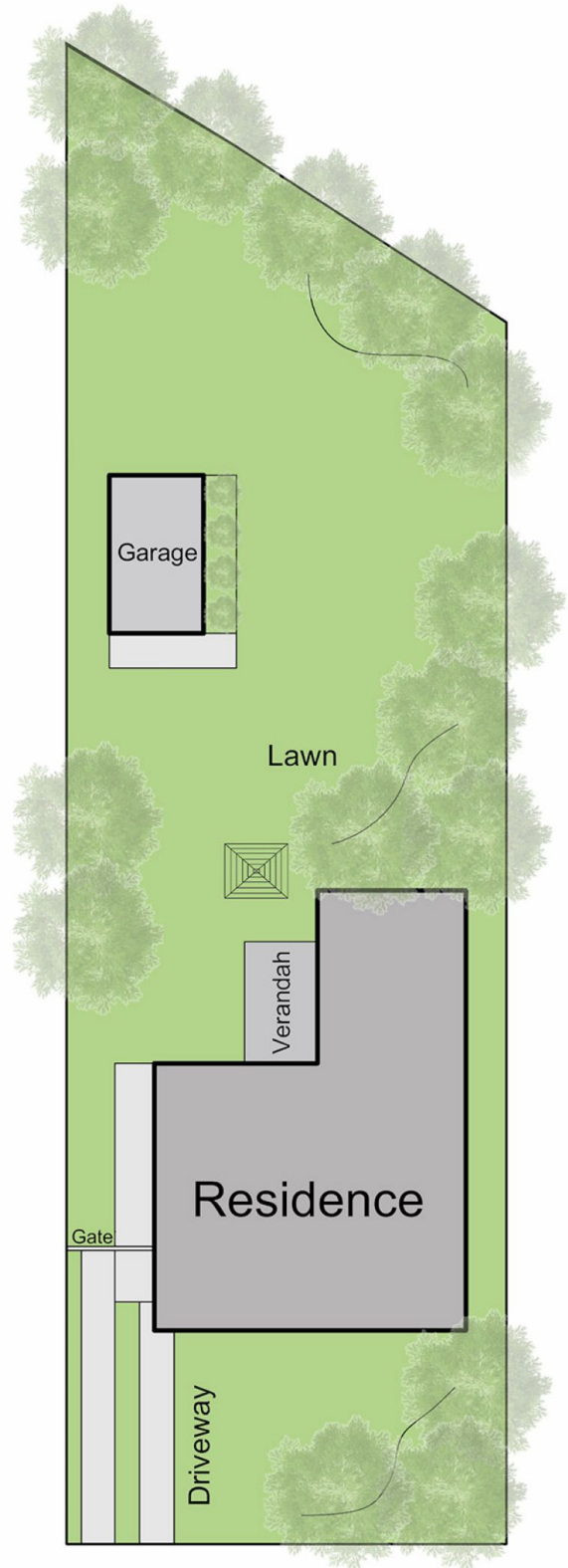
**Price** : \$ 1,245,000  
**Land Size** : 889 sqm  
**View** : <https://www.ypa.com.au/7395476>



**Elke Remscheid**  
0423 211 315



Floor Plan



Site Plan

Total Living Area  
Approx. 11 Squares

## 25 Prescott Avenue, Safety Beach

This floorplan is for illustration purposes only and no warranty is given to its accuracy. Purchasers are advised to carry out their own investigations. Produced by **realtwriters (03) 5970 2222**