



2B Dahlia Street Dromana VIC

4 2 2

PLEASE NOTE, PHOTO ID WILL BE REQUESTED FOR INSPECTIONS. FACE MASKS ARE MANADATORY FOR EVERYONE ON VENDOR'S REQUEST. THANK YOU

For inspections please call ot text Elke mobile 0423 211 315

Situated close to the mountain bike riding track and Arthurs Seat State Park, the Eagle Chairlift and a good hike or 8 minutes drive up to the Summit, Seawind Gardens and the Enchanted Maze. Award-winning wineries, cafes, galleries, restaurants, Red Hill Village, Red Hill Consolidated School, beaches and Peninsula Link are all accessible within a short drive. Close to the Dromana Primary School and the bus stop for Dromana Secondary College.

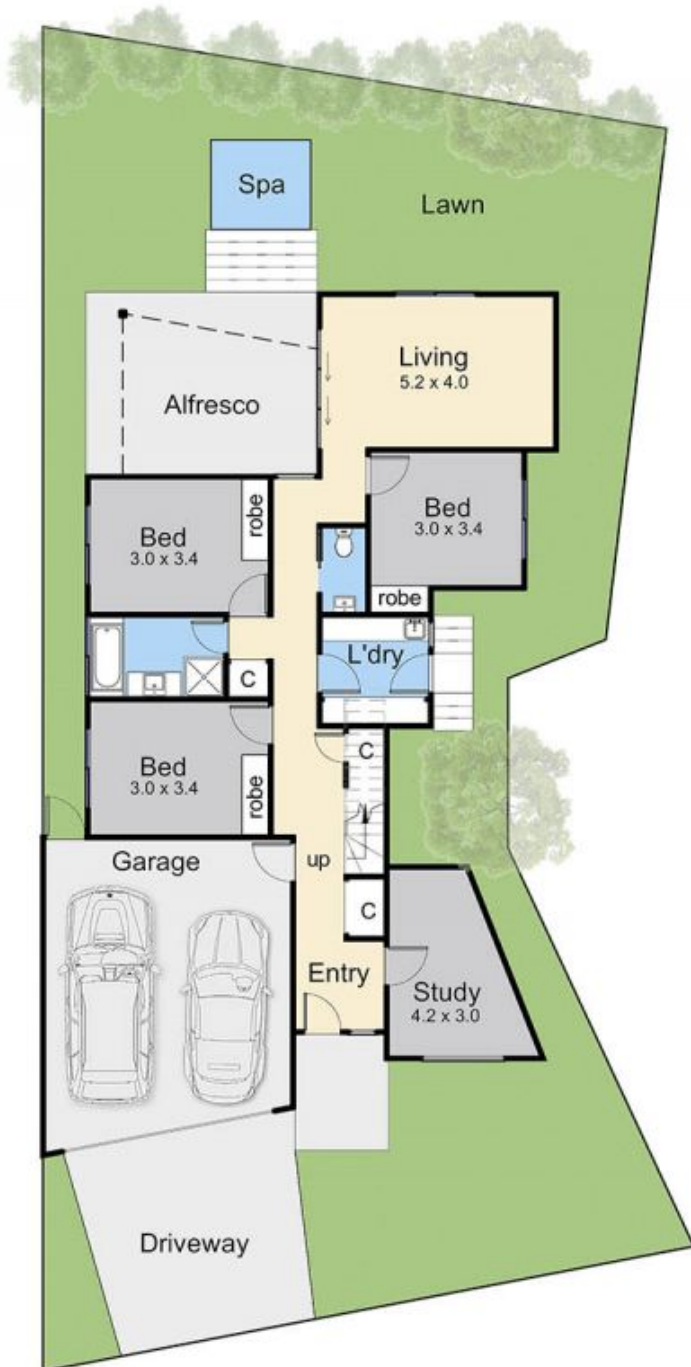
Price : \$ 1,150,000
Land Size : 368 sqm
View : <https://www.ypa.com.au/7395432>



Elke Remscheid
0423 211 315



Monica Paige
0416 255 713



2B Dahlia Street, Dromana

This floorplan is for illustration purposes only and no warranty is given to its accuracy. Purchasers are advised to carry out their own investigations. Produced by **realitywriters** (03) 5970 2222