



## 8 Panoramic Avenue DROMANA VIC

4  3  5 

INSPECT AS ADVERTISED OR CALL/TEXT 0423 211 315 TO BOOK YOUR PRIVATE INSPECTION  
\*\*Photo ID Required\*\*

Land Size : 748 sqm  
View : <https://www.ypa.com.au/7395386>

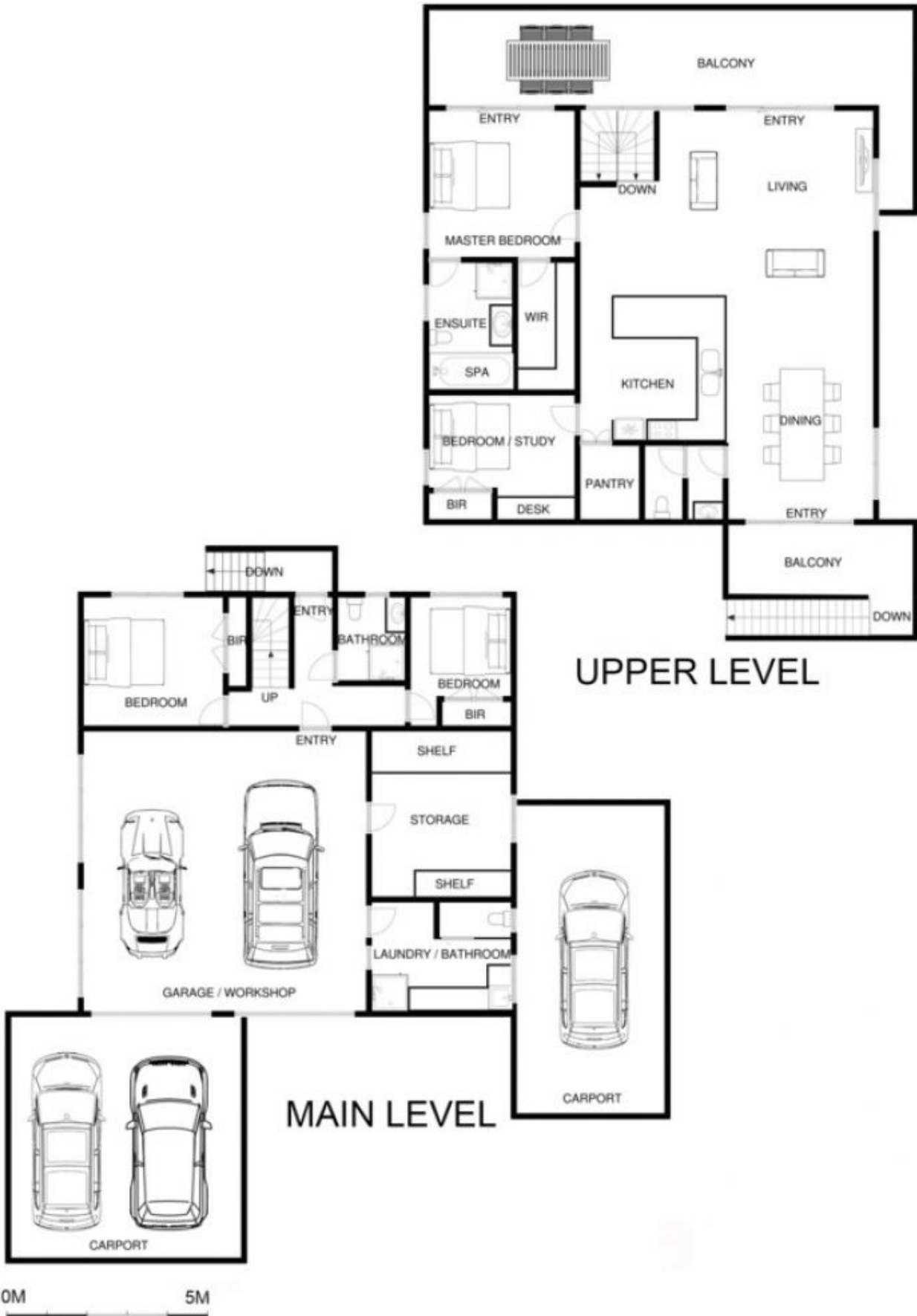
This treasured home would certainly please many, who is going to be the blessed new owner?

Featuring:

- Open plan living, dining and kitchen leading out to large full width entertaining deck
- Four bedroom plus downstairs office or storage room, master with spa ensuite, walk-in robe
- Fantastic car accommodation with double garage and work bench space, double plus single carport, suitable for the caravan and/or boat
- Beautiful backyard with established veggie patch and mature fruit trees, too many to mention them all
- Separate garden shed and/or workshop, sprinkler system,



**Elke Remscheid**  
0423 211 315



# 8 PANORAMIC AVENUE DROMANA

This image is an artistic representation. It is the responsibility of all interested parties to verify all data depicted and omitted.