



42 Jackson Way DROMANA VIC

3  2  1 

Be mesmerised by this stunning hillside position with vistas of the treetops and the bay. Sitting on the north-facing escarpment of Arthurs Seat, this spacious home enjoys elevated aspects and adjoins the neighbouring parkland.

Featuring:

Situated on a private 1638 sqm* allotment with parklike grounds enmeshing with the natural bushland beyond

Enveloped by the nature with views of the bay and shipping channel

Master bedroom with his and her robes leading through to the en suite

Two further separately zoned bedrooms, both equipped with built-in robes and beautiful outlook

Broad sunroom running the width of the home; providing another space for relaxation, studying and entertaining

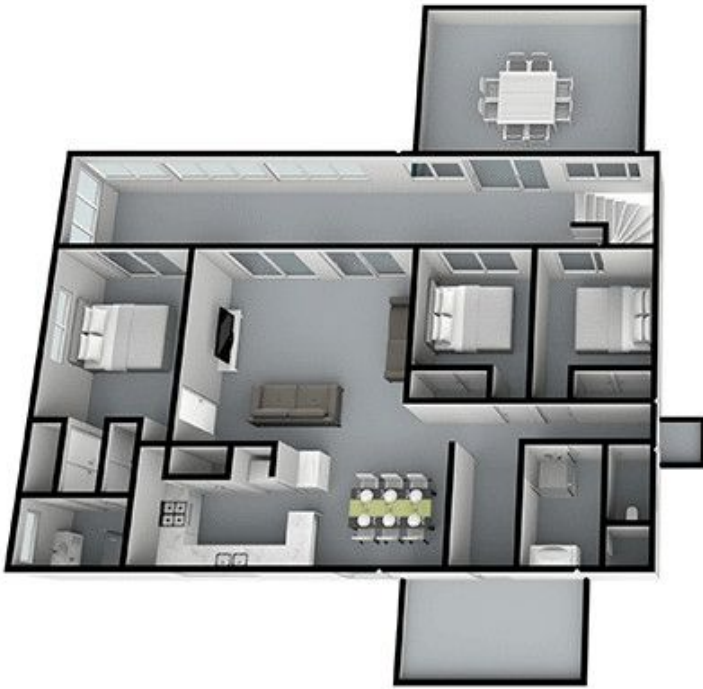
Designated office space on the lower level which could also be used as a fourth bedroom

Land Size : 1638 sqm

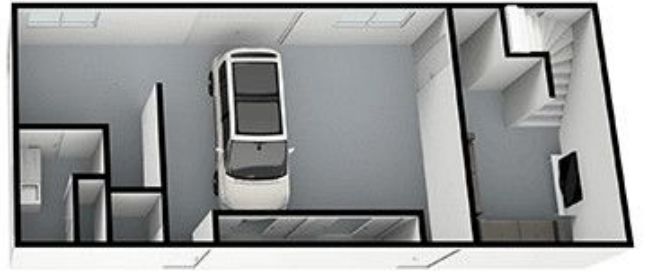
View : <https://www.ypa.com.au/7395314>



Elke Remscheid
0423 211 315



MAIN LEVEL



LOWER LEVEL

42 JACKSON WAY DROMANA

This image is an artistic representation. It is the responsibility of all interested parties to verify all data depicted and omitted.